

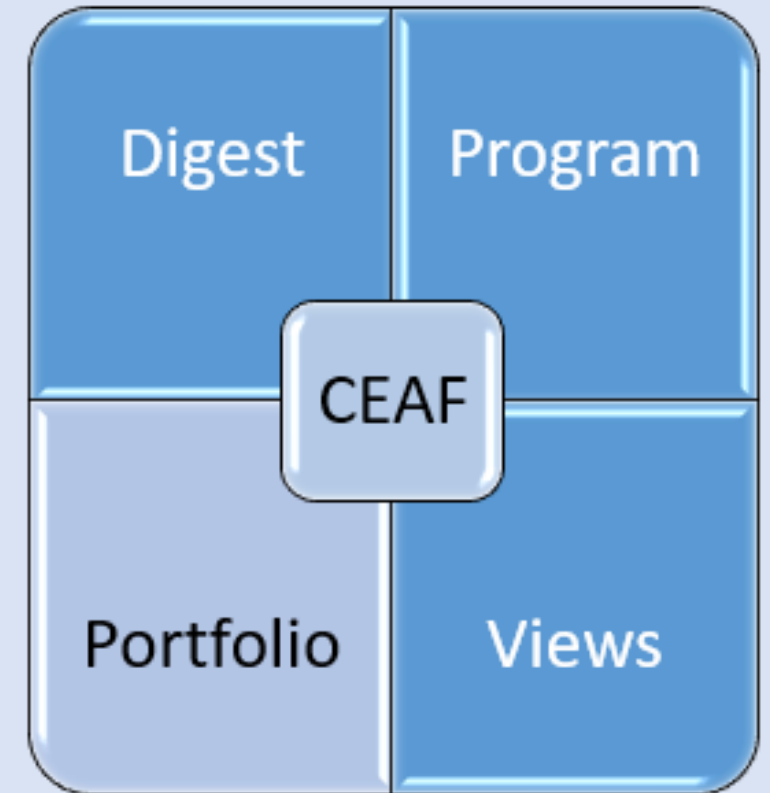
ceaf

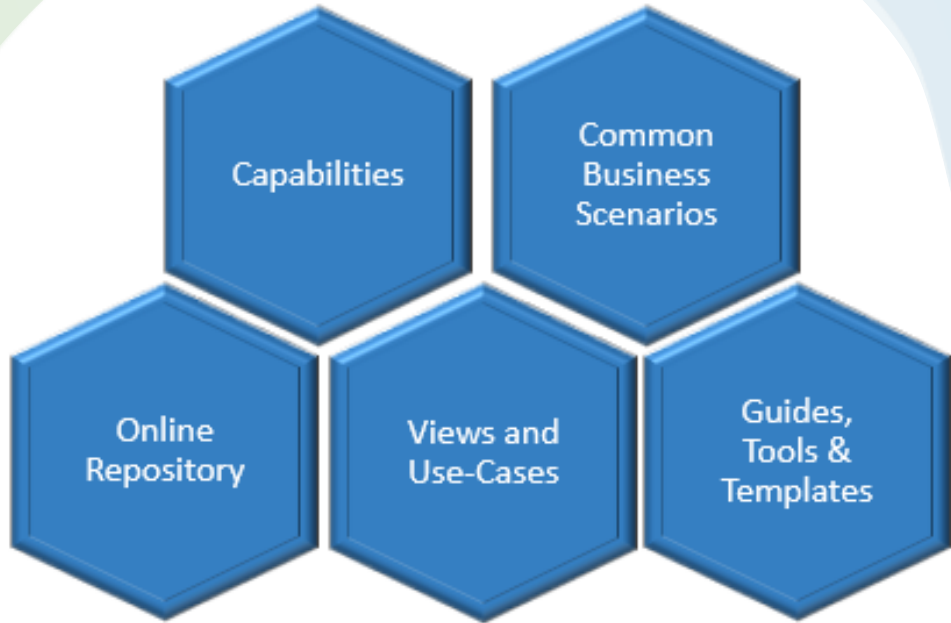
California Enterprise  
Architecture Framework  
Portfolio

# The California Enterprise Architecture Framework Portfolio (CEAF)

The California Enterprise Architecture Framework (CEAF) Portfolio is the third of four core building blocks in the framework.

The CEAF Portfolio outlines California's core EA capabilities and services, the online statewide repository, and explains the approach to exercising its use.





## Portfolio Focus

Enterprise Architecture (EA) programs require a portfolio of professional services and applicable capabilities that inform investment decisions based on solutions that result in the achievement of strategic and/or tactical organizational outcomes.

# Portfolio Vision

The CEAF Portfolio vision is to establish a single resource of proven practice methods for California's EA programs to leverage and contribute to, as well as further unify and mature the larger EA Community.

## Benefits

- Consistent methods of service delivery
- Supports cross-program and single transformation initiatives
- Exposure of information technology (IT) that may be interoperable, shared or consolidated

## Expectations

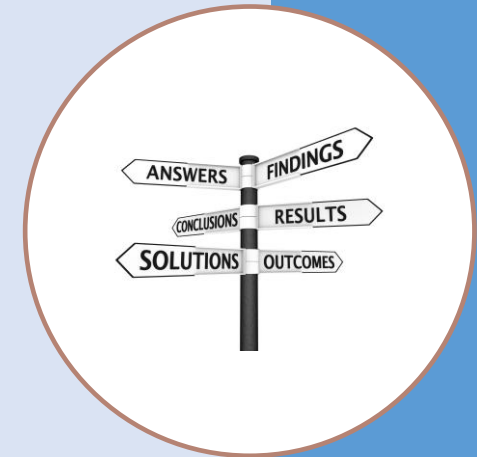
- EA Community contributions
- Work consistency for state staff and vendor partners



# Expected Outcomes

When EA activities stem from a focused core set of capabilities and services the organization achieves....

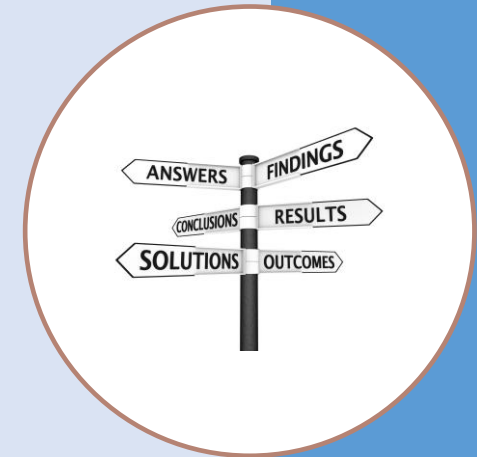
- Business strategy(s) bridged with implementation as well as predictable success of projects and realization of their defined objectives
- IT alignment with organization mission, goals, and objectives
- Improved business capabilities, business operations and service delivery to customers
- Improved interoperability and information sharing



# Expected Outcomes Continued

When EA activities stem from a focused core set of capabilities and services the organization achieves....

- Dynamic response(s) to customer needs and statutory changes
- Reductions in cost as well as debt
- Reduction in redundancy, duplication, complexity and information silos
- Reduction of business risk associated with IT and reduce risk for future IT investment



## Portfolio Goals

1. Facilitate design and planning consistency among department EA programs
2. Enable accurate communications within and between organizations
3. Align department EA programs more easily to the state EA program

# EAs are Internal Management Consultants

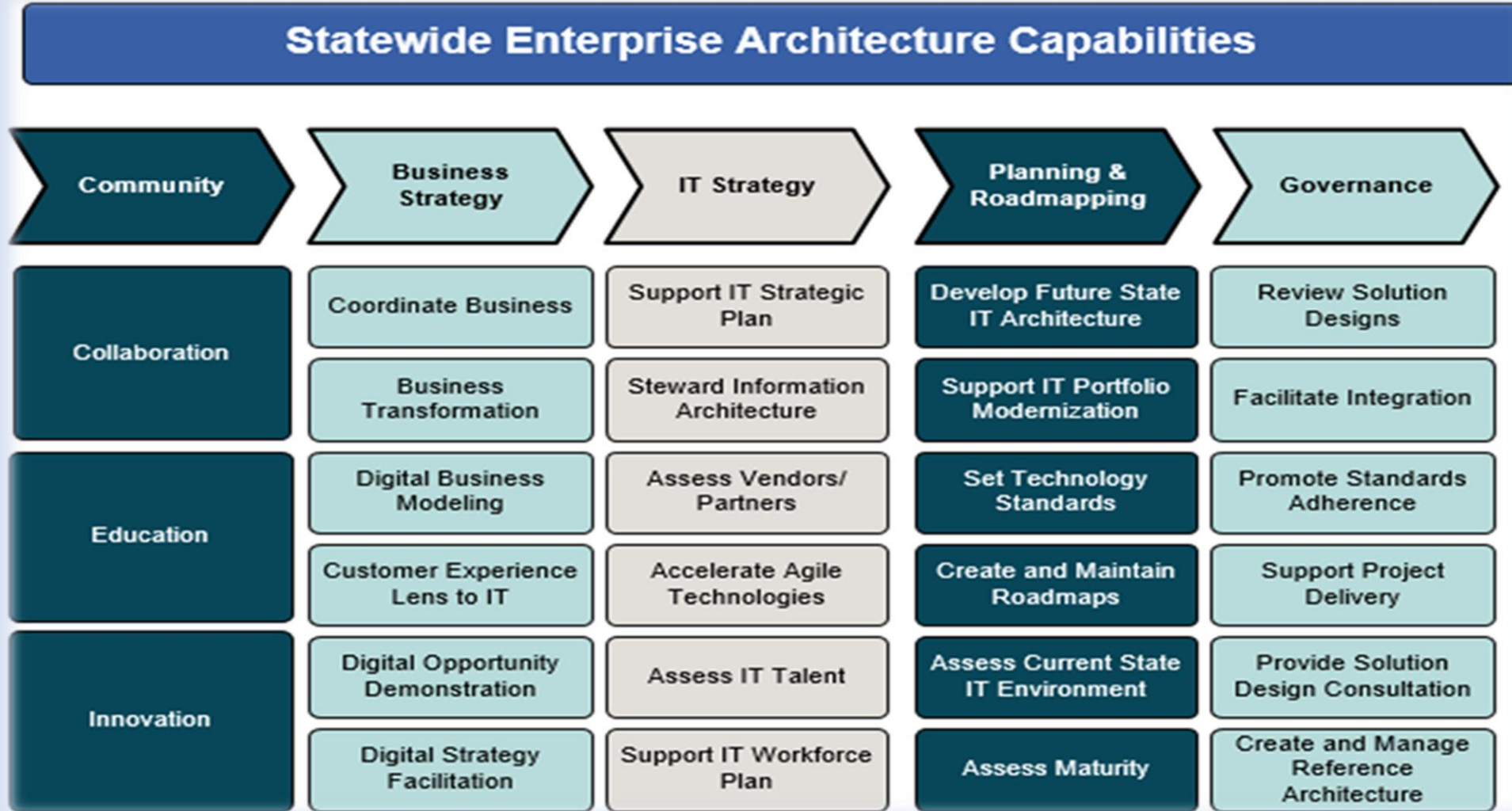
Treat EA as a form of internal management consulting to reduce the time it takes to deliver solutions. Doing so creates

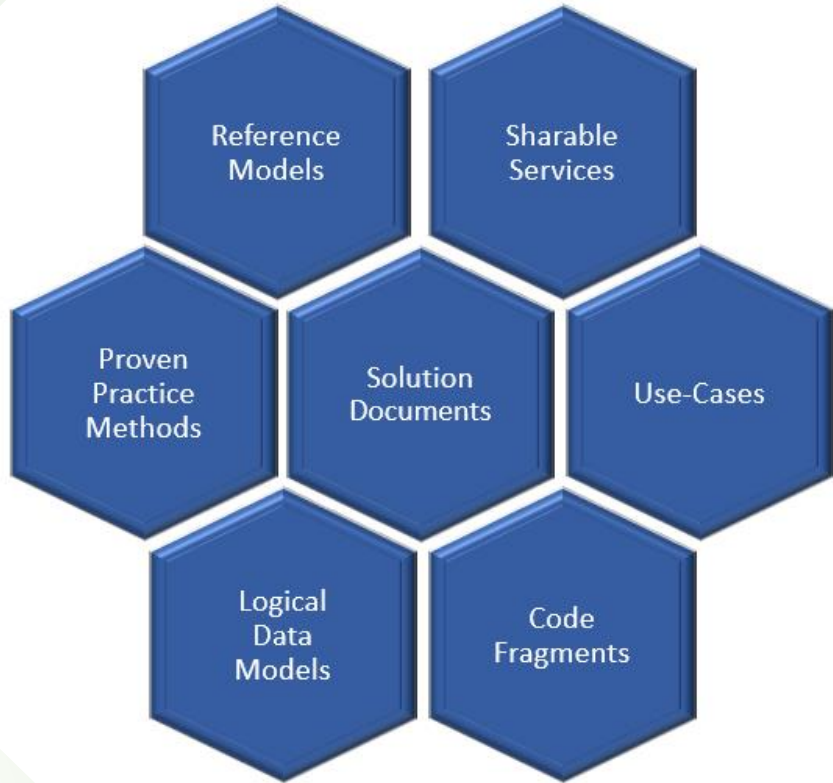
- A flexible and agile practice focused on solving problems through agile service delivery.
- Immediate understanding of what EA does and how it delivers value.

When architects are firmly in conversation with leadership, then it's a catalyst for delivering thoughtful, innovative and quality solutions, and for remaining agile and effective.



# California's EA Capabilities





# Community

The CEAF actively supports a Re-use-EA culture. Our state IT community has much to gain from fostering the input, collaboration, and experience of practicing architects when they perform from a common set of capabilities.

## Business Strategy

articulates the direction an organization will pursue and specific actions it will take to achieve its goals

Programs should focus on the creation of the strategic business information asset base.

- Mission-specific business capabilities
- Business Processes

Architecture Domain: Business Architecture

## IT Strategy

focuses on how IT will help the business achieve its goals and guide the business strategy based on IT capabilities and projects

Programs should focus on the creation of the strategic IT asset base.

- Information models depicting information used and maintained by the business processes
- Applications and their key components used to fully or partially automate the business processes
- Technologies used by the applications, i.e., application platforms (including hardware devices and system software) and network communication paths
- Relationships among the above components of the architectures and their relationships to organization's strategic goals and stakeholder needs

Architecture Domain: Information, Application, & Technology Architecture

## Planning & Roadmapping

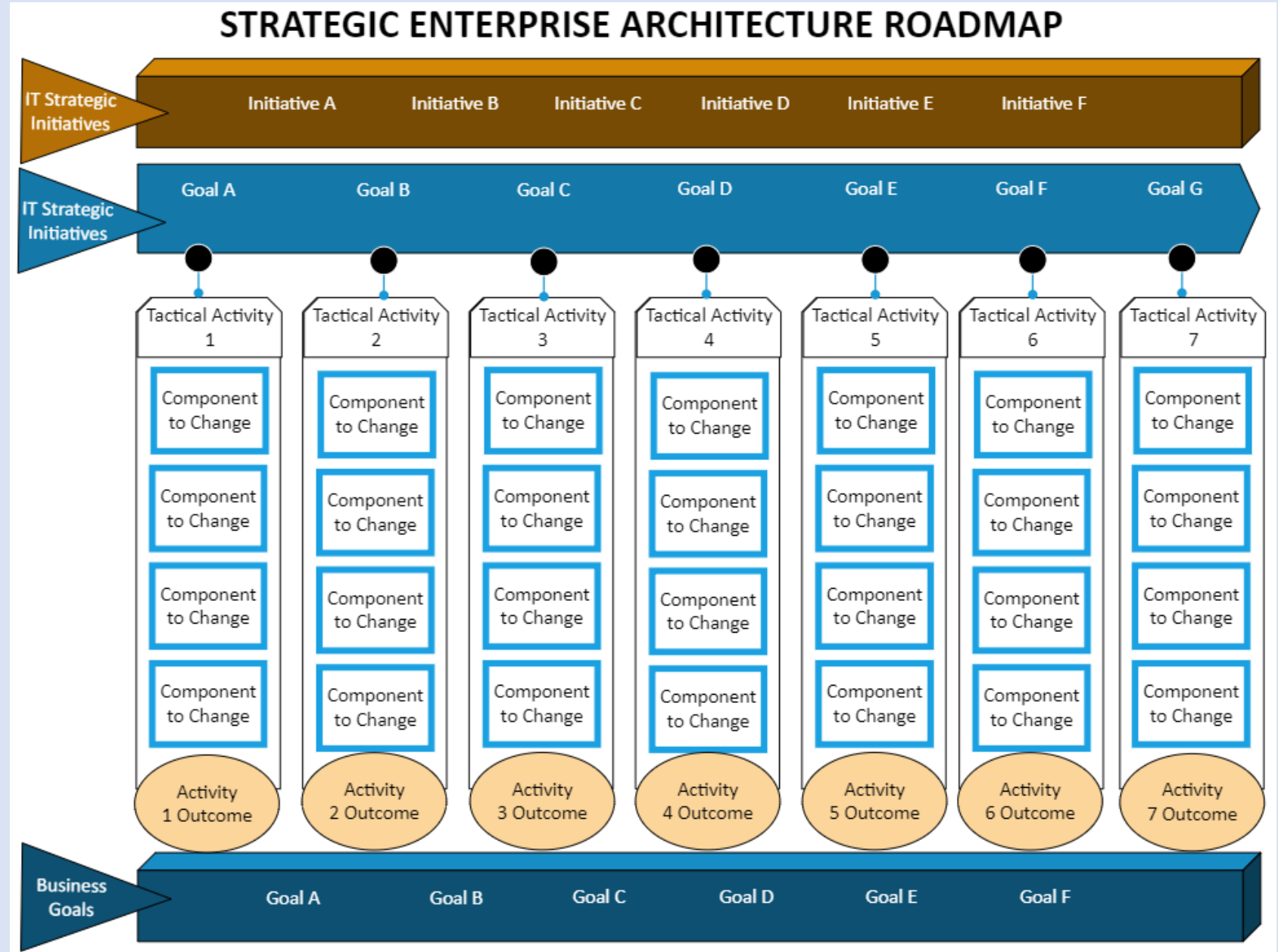
provide a sequenced plan to get to the future state architecture through a prioritized set of transformation projects or changes. It promotes long-term focus and facilitates continuity

Programs should focus on the creation of both enterprise and business transformation roadmaps. Planning and roadmapping are key inputs to such EA activities as:

- Cross-Program Initiative Consultation
- Governance Participation
- Investment Management Reviews
- Informing Procurement Activities

Architecture Domain: Strategy, Business, Information, Application, & Technology Architecture

# Sample Roadmap



## Governance

ensures alignment of projects and initiatives with the future state architecture and roadmap, adherence to standards, and exposes the need for change

Programs support governance not only in consultation of solution designs and promoting standards adherence but also in the facilitation of solution and system integration activities. Programs should participate in:

- Department Review Board(s)
- Governance Bodies
- Architectural Review Meetings

Architecture Domain: Strategy, Business, Information, Application, & Technology Architecture

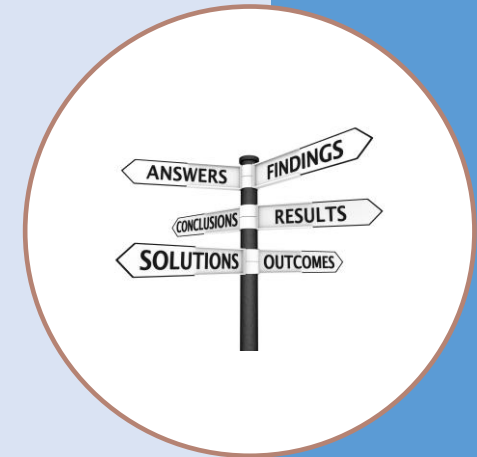
# Statewide EA Repository

Intended to facilitate your program's ability to provide services regardless of how your architects are engaged within the organization.

Repository information is presented in three logical navigation paths:

- Common Business Scenarios
- Capabilities
- Direct Repository Search

Accessible in the EA Community Forum: [Repository - Community \(ca.gov\)](https://www.ca.gov/ea-community-forum/repository-community)





## Common Business Scenario Subforum

Common scenarios within state business arise where EA is more likely to provide services that are more widespread and demand higher frequency of consultation, therefore benefit from consistent service patterns. Common scenarios include:

- Project Planning
- Governance Planning
- EA Program Planning
- Workstream Transformation

Architects navigate by common business scenario when information is needed for a traditionally common business process.

## Capability Subforum

EA programs are often tasked to provide analytical inputs in support of strategic and project initiatives. The program may not be a stakeholder to the initiative, however, may be called upon to facilitate or participate in workgroups.

Architects navigate by capability when information is desired and the method to attain those outcomes are not prescribed by stakeholders.

Direct  
Repository  
Search  
Subforum

Architects can access guidelines, tools, and templates directly in the CEAF Repository. The structure follows the EA Cube framework:

- Strategy Goals and Initiatives (enterprise view)
- Business Products and Services (business view)
- Data and Information (data view)
- Systems and Applications (application view)
- Networks and Infrastructure (technology view)
- Security and Privacy (security view)
- Workforce Skills (staff view)
- Standards (policy view)

Architects can search for specific artifacts.

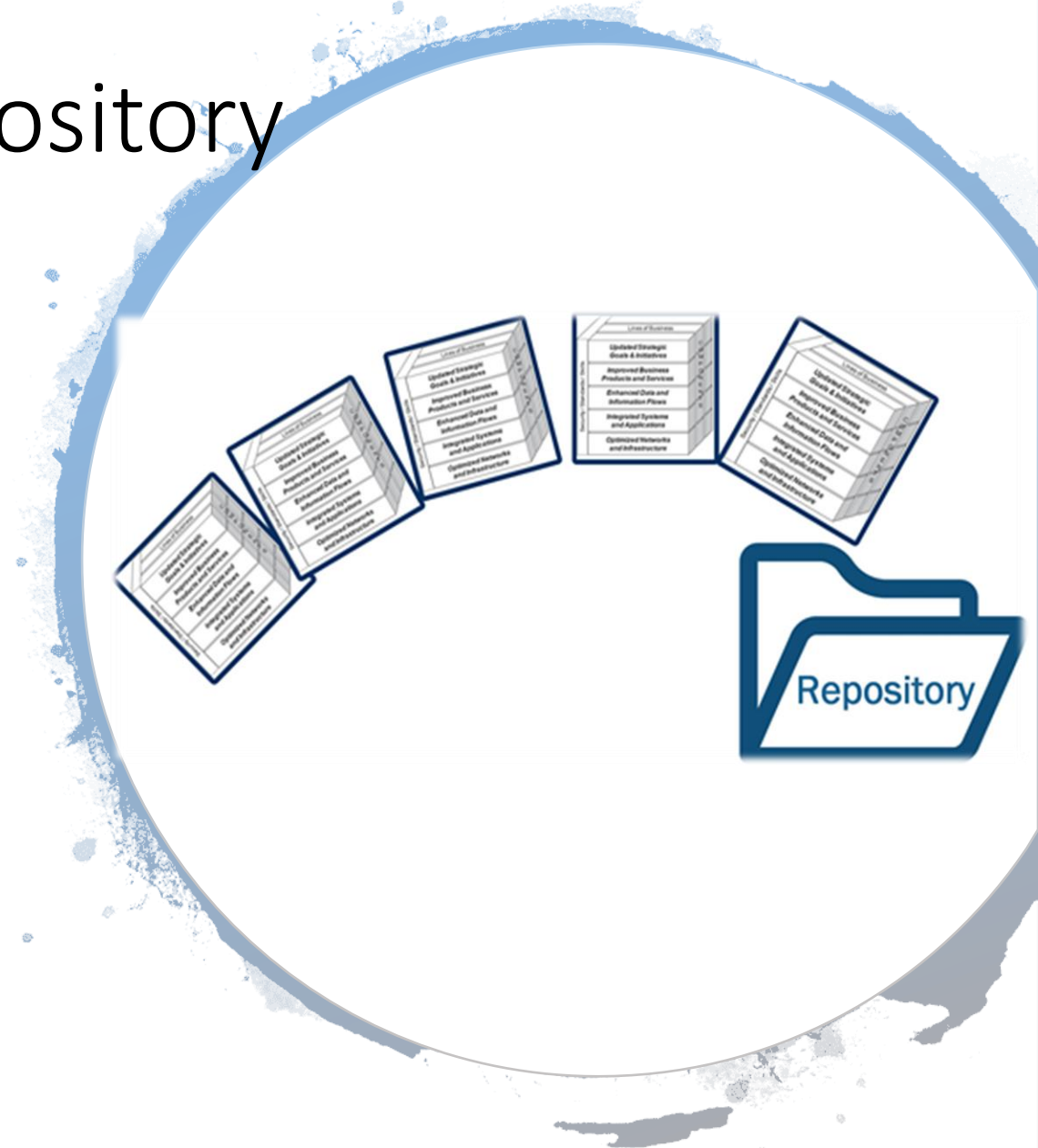
# Statewide EA Repository

The Repository also includes:

- EA Community Forum Presentations
- Collaboration portal to connect with other practicing EA professionals

Link: [EA Community Forum](#)

Link: [Forum Tutorial Overview](#)





From the CDT's homepage ([www.CDT.ca.gov/services/ea-home/](http://www.CDT.ca.gov/services/ea-home/)):

[CA Enterprise Architecture Portfolio Presentation](#)

[CA Enterprise Architecture Portfolio](#)

We would like to hear from you! Provide your questions, comments and feedback regarding the CEAF Portfolio, in the [Enterprise Architecture Communities Forum](#).

Thank you