



Project 11 | Inyo Overview Packet  
January 31, 2022

This map identifies the initial 18 broadband project areas and the network solutions proposed by the Third Party Administrator (TPA), GoldenStateNet, which build upon the California Public Utilities Commission (CPUC) recommended routes. Highlighted in this packet are the solutions identified for the Inyo Project and other geospatially registered data sets which influenced them.



## Project 11 | Inyo Summary

Stretching across Death Valley National Park and outside populated areas, the Inyo area project is part of an ongoing network strategy to connect network infrastructure across U.S. Park Service land to a major Los Angeles Internet Exchange Point. When completed, the Inyo Project will greatly enhance broadband service in Death Valley and bring middle-mile infrastructure close to the unserved Tribal Nations of Timbi-Sha Shashone, Lone Pine Paiute, Big Pine Paiute, and Tecopa.

GoldenStateNet's proposal links a planned California Public Utilities Commission fiber broadband deployment to Death Valley Junction to existing open access network, via Highway 190, at a connection point south of Keeler. The complete 110-mile GoldenStateNet and Caltrans-managed project will face harsh desert conditions and likely require coordination with the National Park Service.

---

## Project 11 | Inyo Highlights

<b>Type of Solution:</b>	New Construction Fiber Build
<b>Highways/Routes:</b>	HWY 190
<b>Start and End Points or Cities connected:</b>	Death Valley Junction, Furnace Creek, Stovepipe Wells, Keeler, Baker
<b>Approximate Fiber Miles:</b>	216
<b>Quantity of Fibers:</b>	288
<b>Approximate Start Date:</b>	2022
<b>Tribal Nations Currently on the Project Path:</b>	Timbi-Sha Shashone, Lone Pine Paiute, Big Pine Paiute, Tecopa
<b>Regional Transportation Planning Agency (RTPA) &amp; Metropolitan Planning Organizations (MPO):</b>	Inyo County Local Transportation Commission, Southern California Association of Governments, San Bernardino County Transportation Authority

---

## GoldenStateNet Maps

The appended maps share detailed visualizations of the GoldenStateNet (TPA) recommended middle-mile network solutions. The maps illustrate the complex geographical, topological, technological, and socioeconomic landscape of California.

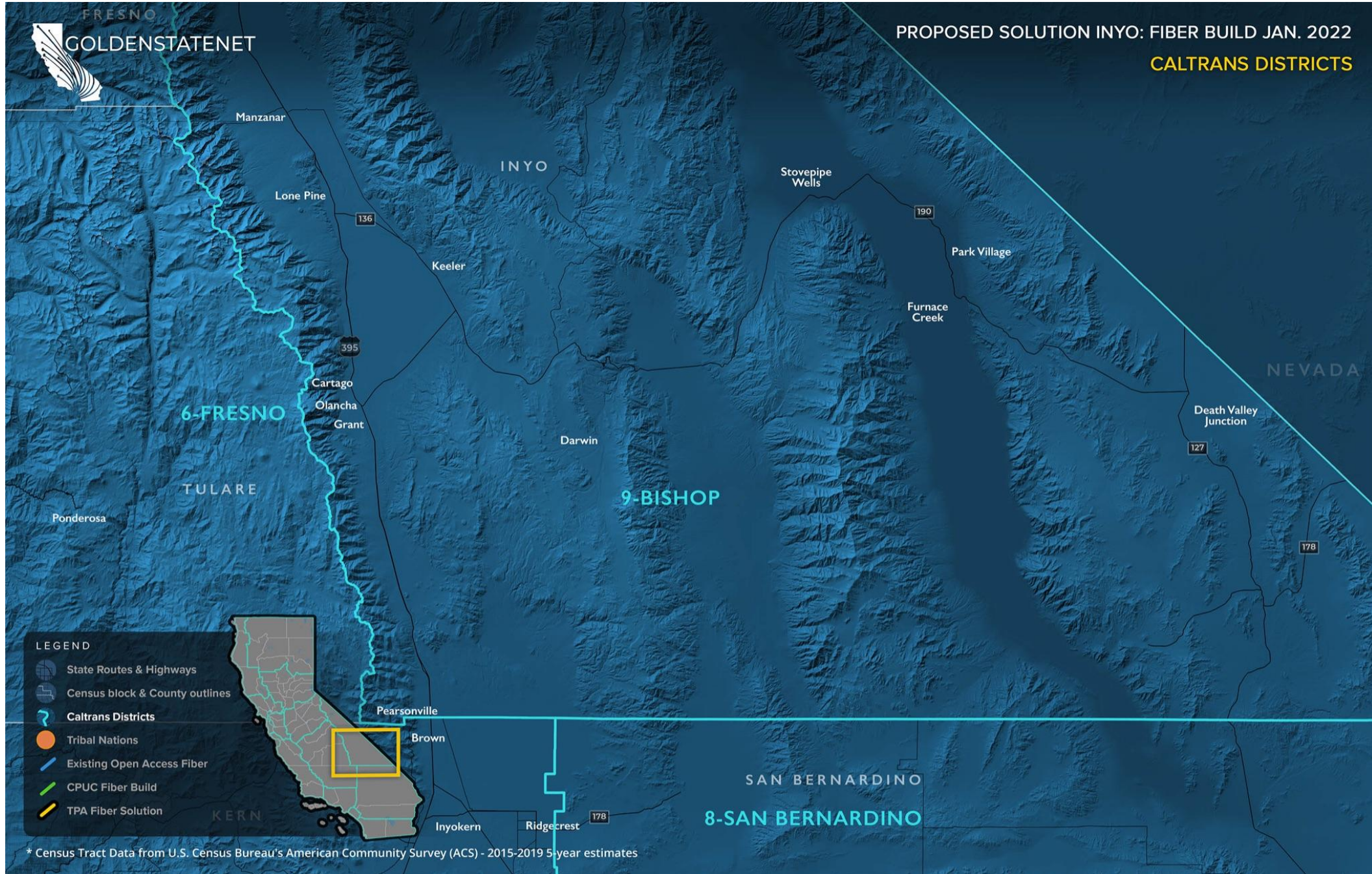
In combination with available network assets and regional partnerships, the map data has helped to directly inform GoldenStateNet's well-considered proposals.





FRESNO GOLDENSTATENET

PROPOSED SOLUTION INYO: FIBER BUILD JAN. 2022  
CALTRANS DISTRICTS

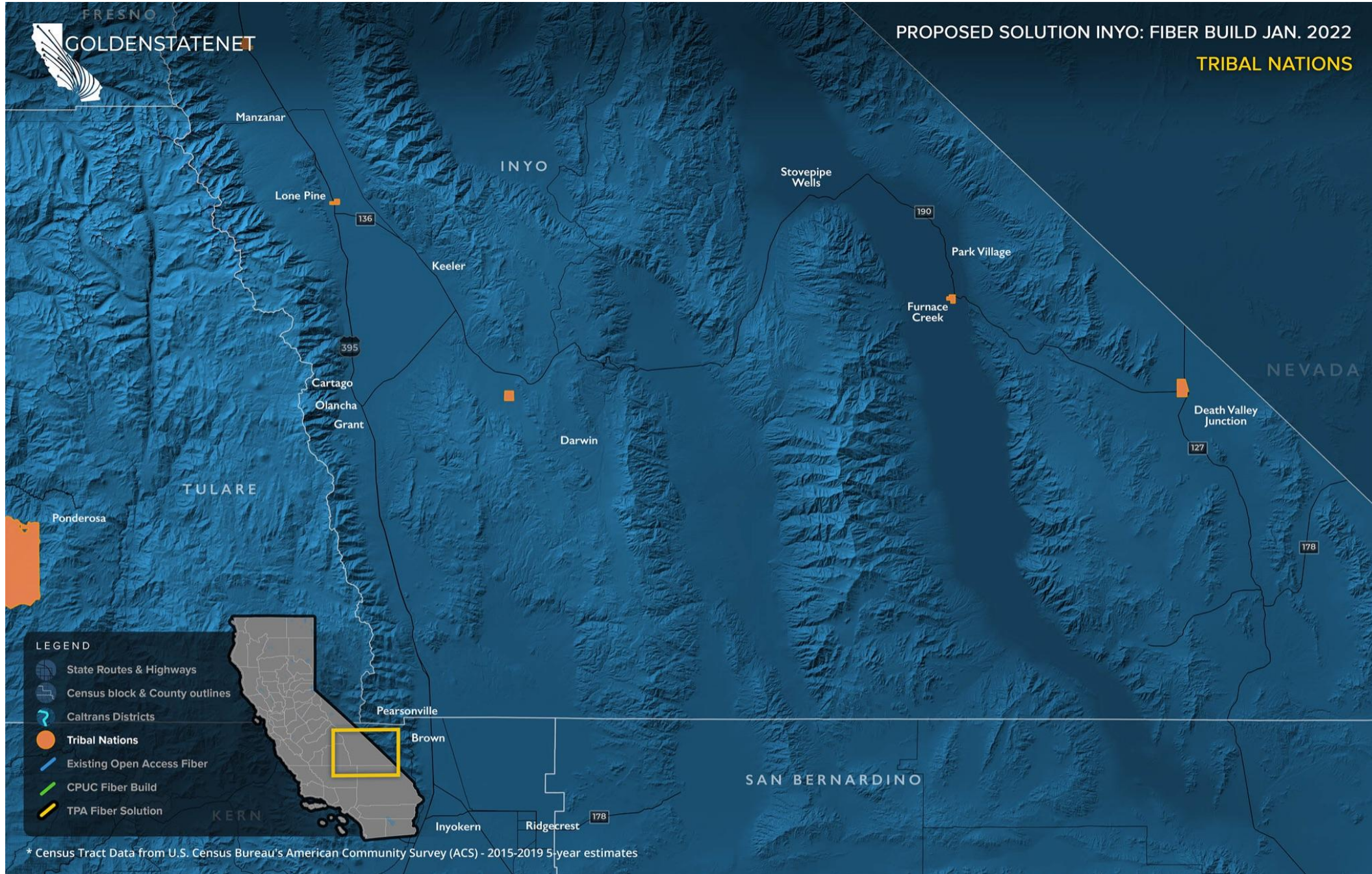






FRESNO  
GOLDENSTATENET

PROPOSED SOLUTION INYO: FIBER BUILD JAN. 2022  
TRIBAL NATIONS



- LEGEND**
- State Routes & Highways
  - Census block & County outlines
  - Caltrans Districts
  - Tribal Nations
  - Existing Open Access Fiber
  - CPUC Fiber Build
  - TPA Fiber Solution

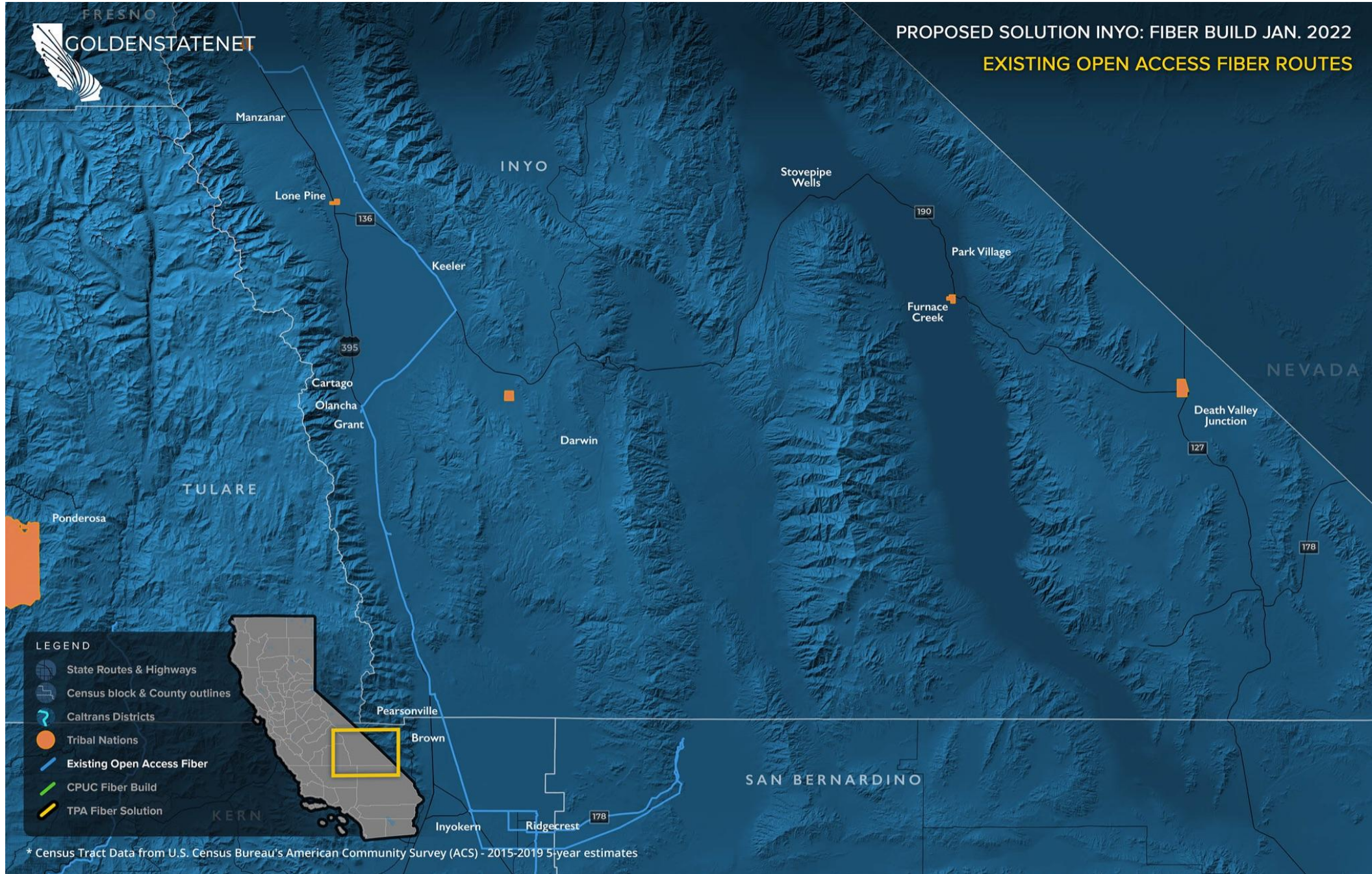
\* Census Tract Data from U.S. Census Bureau's American Community Survey (ACS) - 2015-2019 5-year estimates





FRESNO  
GOLDENSTATENET

PROPOSED SOLUTION INYO: FIBER BUILD JAN. 2022  
EXISTING OPEN ACCESS FIBER ROUTES

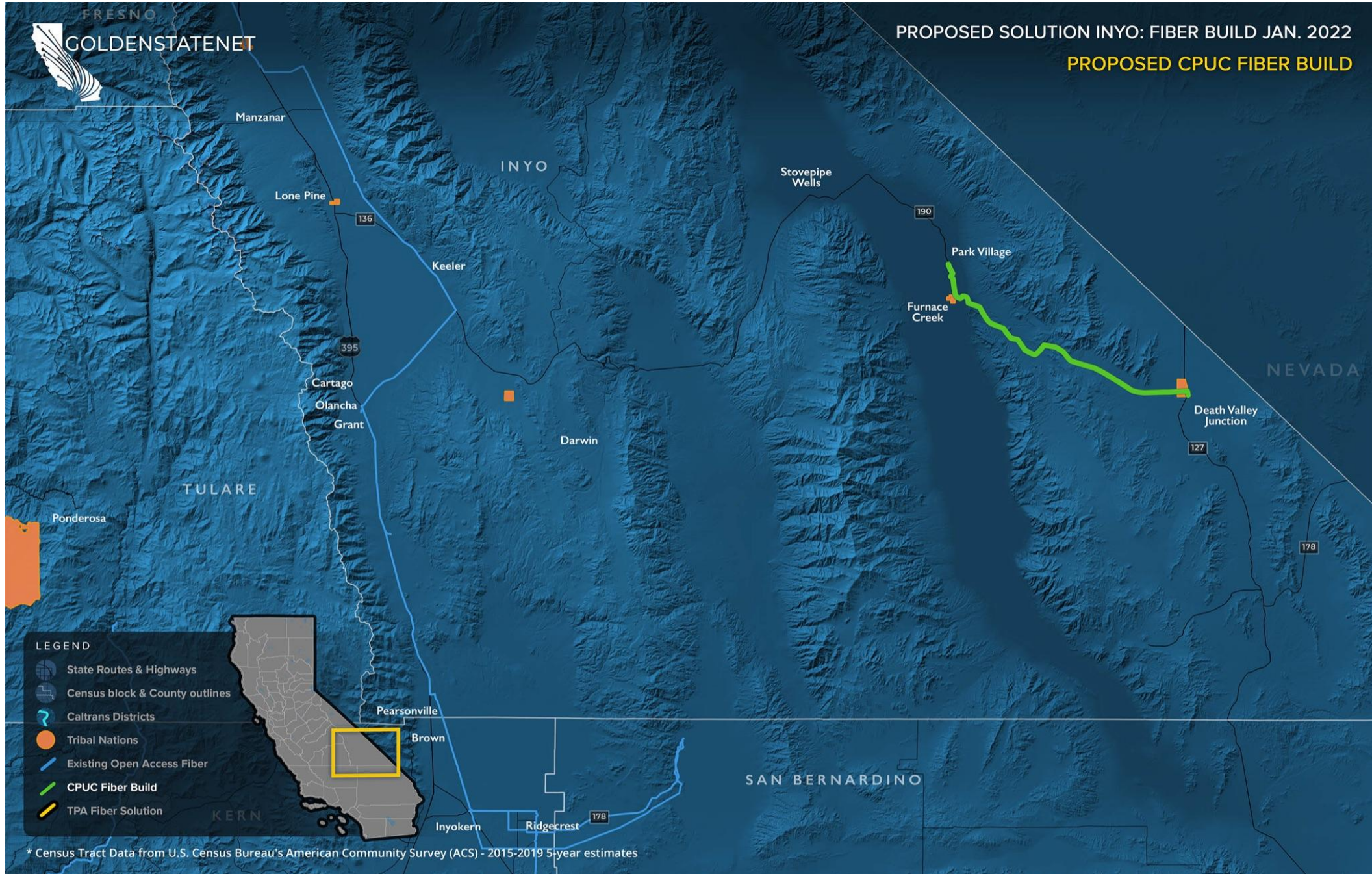




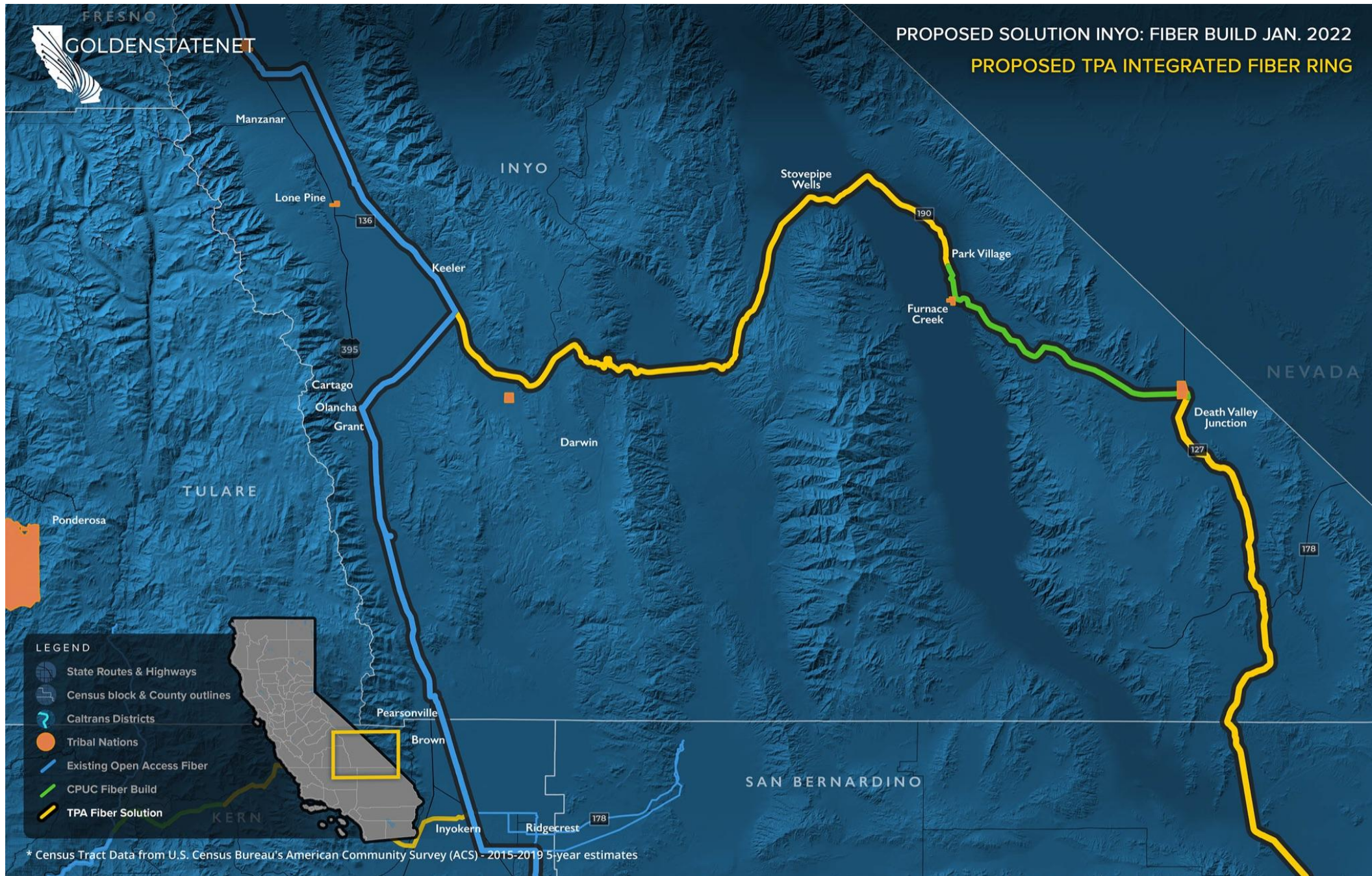


FRESNO GOLDENSTATENET

PROPOSED SOLUTION INYO: FIBER BUILD JAN. 2022  
PROPOSED CPUC FIBER BUILD





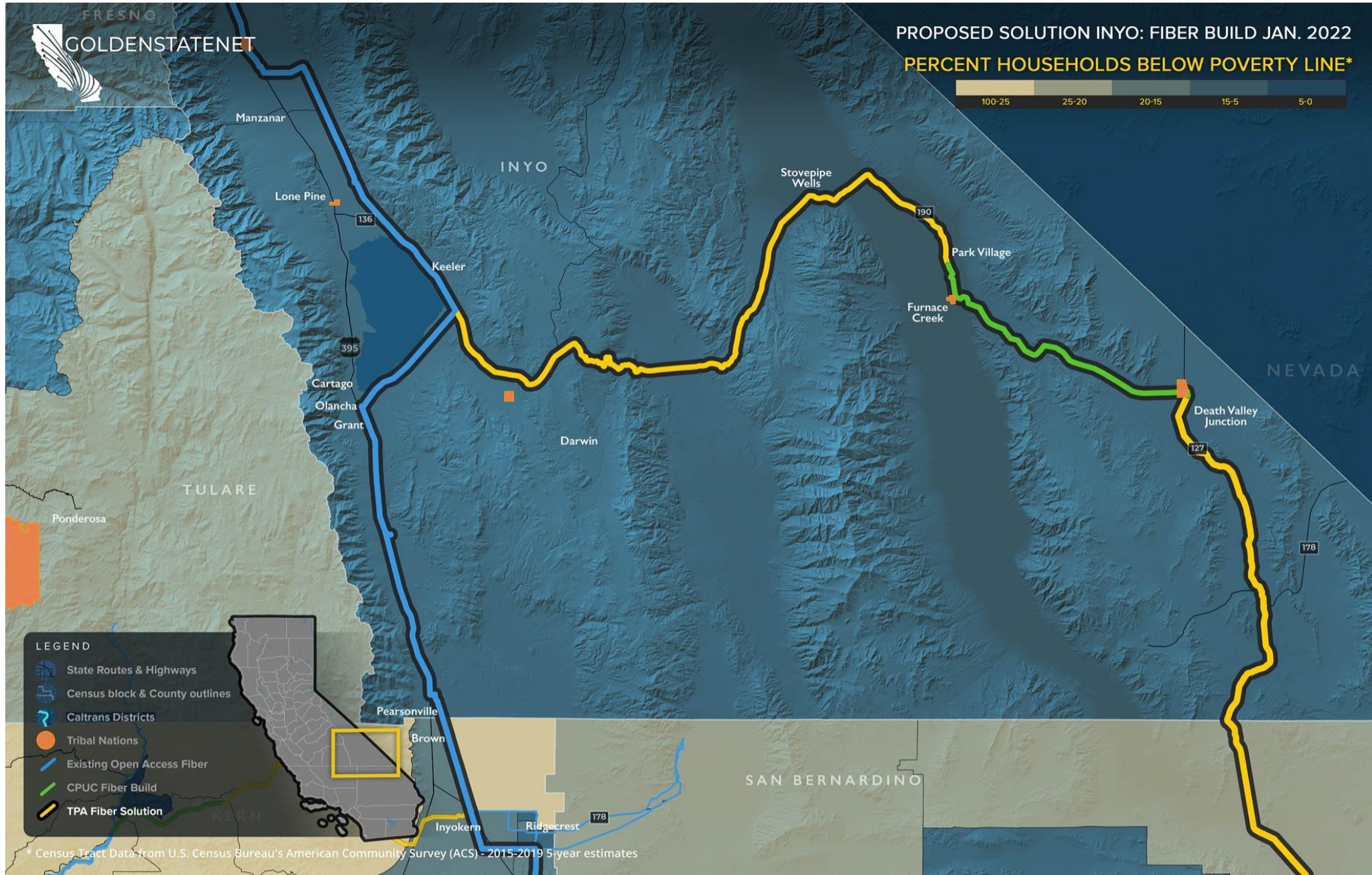
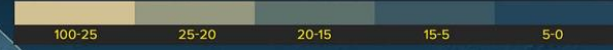






GOLDENSTATENET

PROPOSED SOLUTION INYO: FIBER BUILD JAN. 2022  
PERCENT HOUSEHOLDS BELOW POVERTY LINE\*

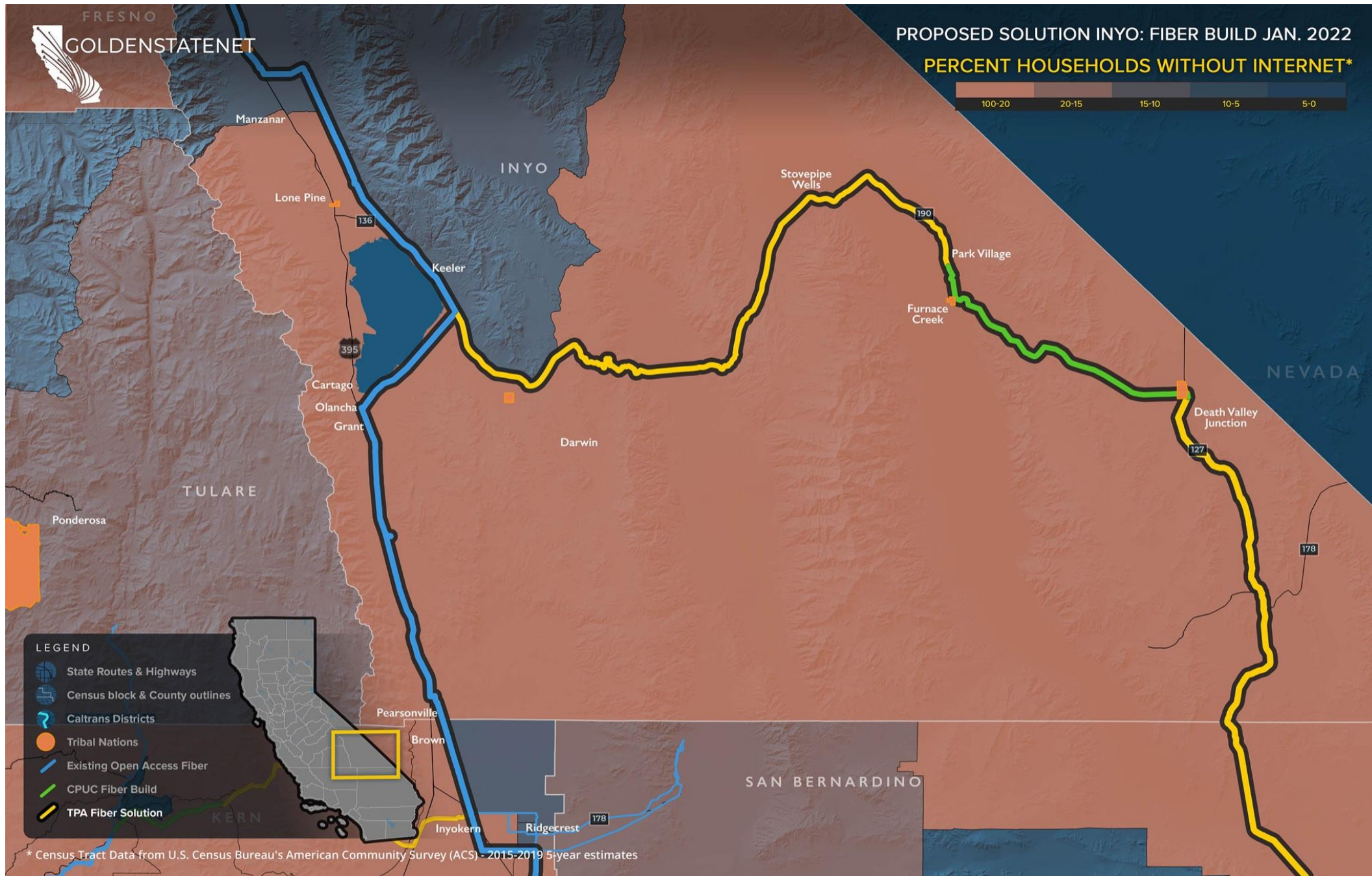


- LEGEND**
- State Routes & Highways
  - Census block & County outlines
  - Caltrans Districts
  - Tribal Nations
  - Existing Open Access Fiber
  - CPUC Fiber Build
  - TPA Fiber Solution

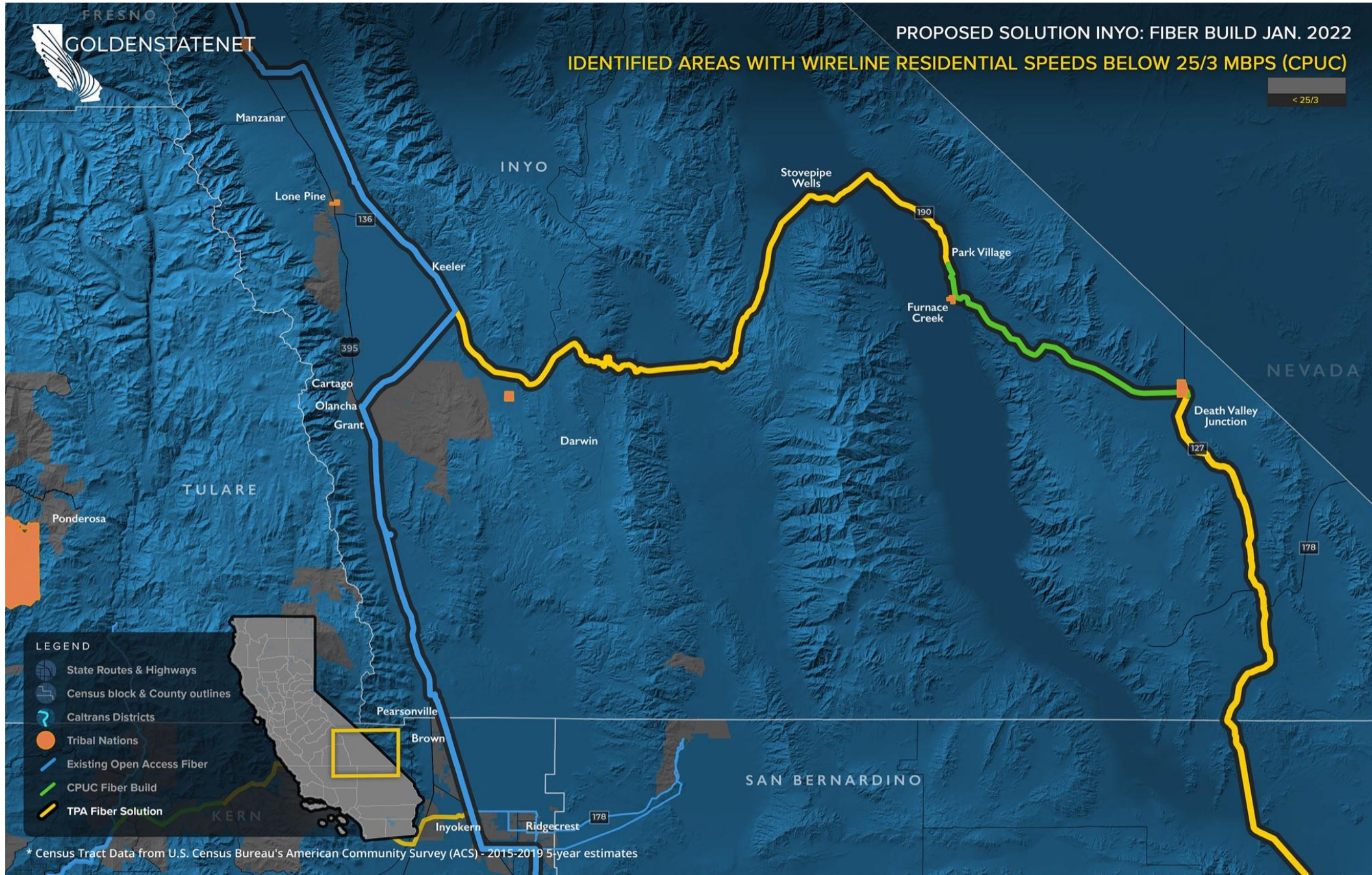


\* Census Tract Data from U.S. Census Bureau's American Community Survey (ACS) - 2015-2019 5-year estimates

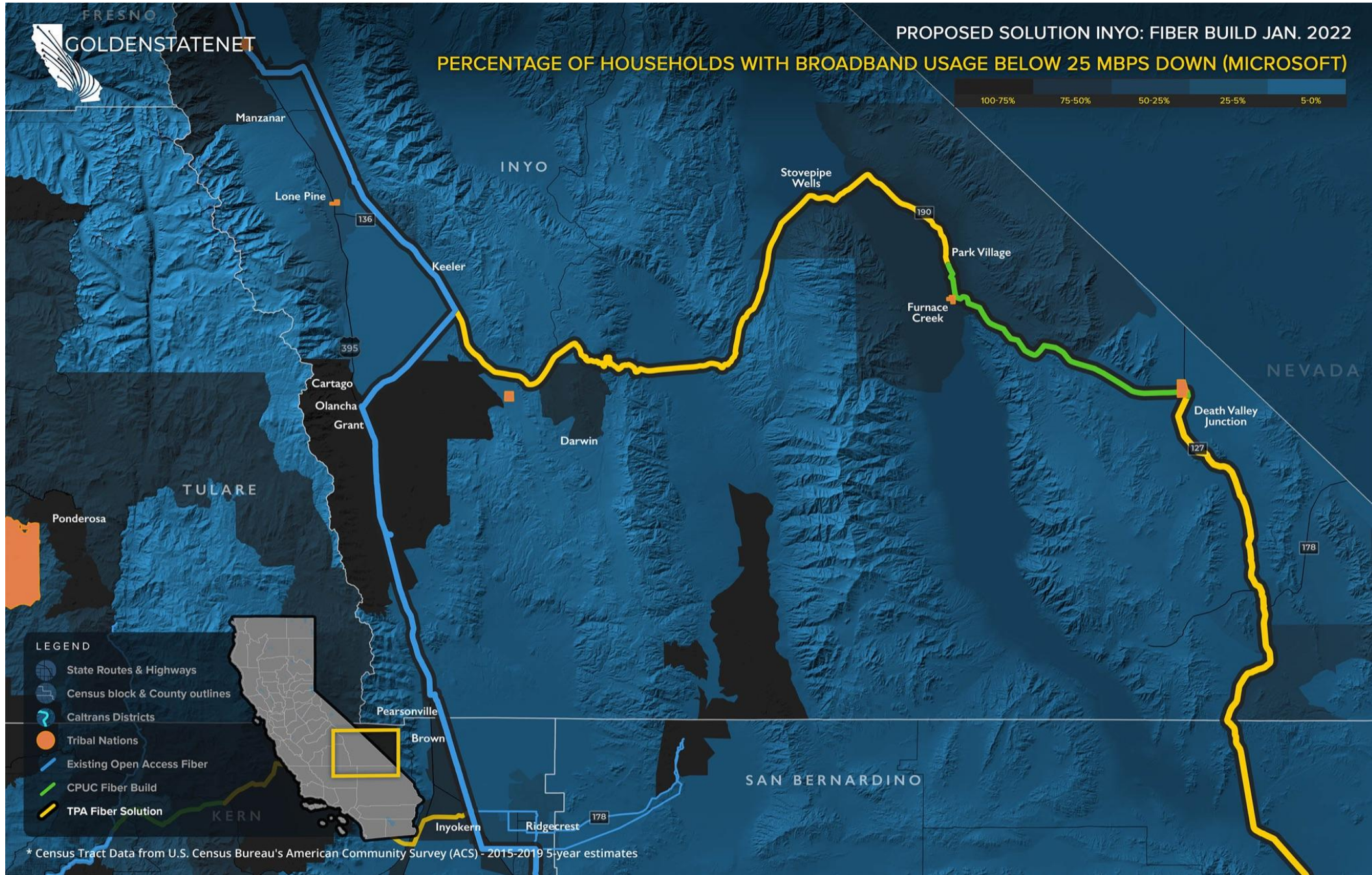














## Data Sources\*

- American Community Survey - Internet Connectivity
- American Community Survey - Poverty Status
- California 2020 Legislative District Boundaries
- California Broadband Availability Maps and GIS Data
  - 20 Layers used from combined database
- California Census Blocks
- California Census Tracts
- California Counties
- California Fire Hazard Severity Zones
- California National Highway System
- California Major Lakes and Reservoirs
- California Parks Land
- California State Highway Network (SHN)
- California Tribal Lands
- CalTrans Jurisdictions
- CENIC Digital Fiber Segments
- CPUC Fixed Served Status
- Existing Open Access Networks - Under NDA
- FCC Fixed Consumer Deployment
- Microsoft Broadband Usage Percentages Dataset
- Ookla Test Data Results by Census Tract
- Technology Use Demographics (e.g. Internet use in home) by Census Tract

*\*All data was published between 2019 - 2021 and represents the most current data available. Not all layers are represented on the maps above. However, the data was utilized as a part of the development process.*



