



GOLDENSTATENET

Project 14 | San Bernardino Overview Packet  
January 31, 2022

This map identifies the initial 18 broadband project areas and the network solutions proposed by the Third Party Administrator (TPA), GoldenStateNet, which build upon the California Public Utilities Commission (CPUC) recommended routes. Highlighted in this packet are the solutions identified for the San Bernardino Project and other geospatially registered data sets which influenced them.



## Project 14 | San Bernardino Summary

The San Bernardino area, while densely populated, has a mountainous topology plagued by substandard Internet access and poor cell service. This adversely impacts major area employers and commerce centers like local big-box retailers, car dealerships, package delivery services, as well as nearby state and federal prisons.

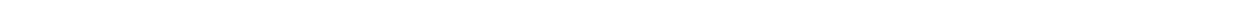
GoldenStateNet's proposed San Bernardino project builds on a proposed route by the California Public Utilities Commission (CPUC), with the addition of a long-term Indefeasible Right of Use (IRU) lease of dark fiber paths to enable a resilient fiber optic ring between Hesperia and Barstow. Additionally, the project will undertake a fiber optic build encompassing 35 miles from Barstow to Lucerne Valley on Highway 247, and a 14- mile section from there to Apple Valley on Highway 18.

The resilient, new fiber optic ring network architecture will add reliability and enhance speed to existing connections to homes and aforementioned businesses. As with all middle-mile projects, the goal is to provide cost savings for last-mile providers to connect to the global Internet, cloud, and content providers. In doing so, it is hoped that such cost reductions will encourage additional last-mile providers to enter uncompetitive local markets that currently feature expensive service plans and limited customer choice.

---

Project 14 | San Bernardino Highlights

<b>Type of Solution:</b>	New Construction Fiber Build Indefeasible Right of Use (IRU) dark fiber lease
<b>Highways/Routes:</b>	HWY 247, 18
<b>Start and End Points or Cities connected:</b>	Barstow, Lucerne Valley, Apple Valley
<b>Approximate Fiber Miles:</b>	69
<b>Quantity of Fibers:</b>	288
<b>Approximate Start Date:</b>	2022
<b>Regional Broadband Consortium:</b>	Inland Empire Regional Broadband Consortium
<b>Regional Transportation Planning Agency (RTPA) &amp; Metropolitan Planning Organizations (MPO):</b>	San Bernardino County Transportation Commission, Southern California Association of Governments





## GoldenStateNet Maps

The appended maps share detailed visualizations of the GoldenStateNet (TPA) recommended middle-mile network solutions. The maps illustrate the complex geographical, topological, technological, and socioeconomic landscape of California.

In combination with available network assets and regional partnerships, the map data has helped to directly inform GoldenStateNet's well-considered proposals.

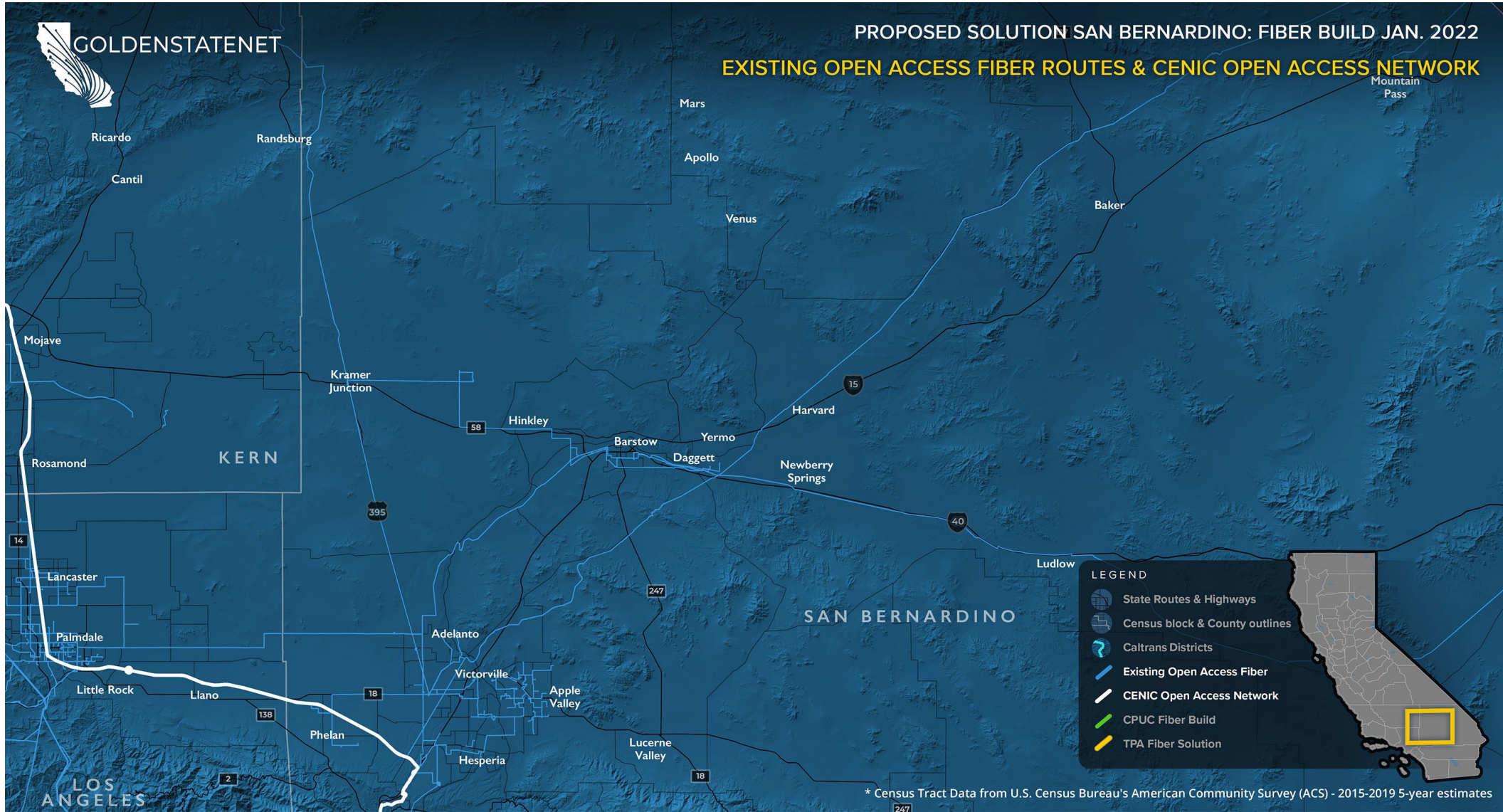






# PROPOSED SOLUTION SAN BERNARDINO: FIBER BUILD JAN. 2022

## EXISTING OPEN ACCESS FIBER ROUTES & CENIC OPEN ACCESS NETWORK



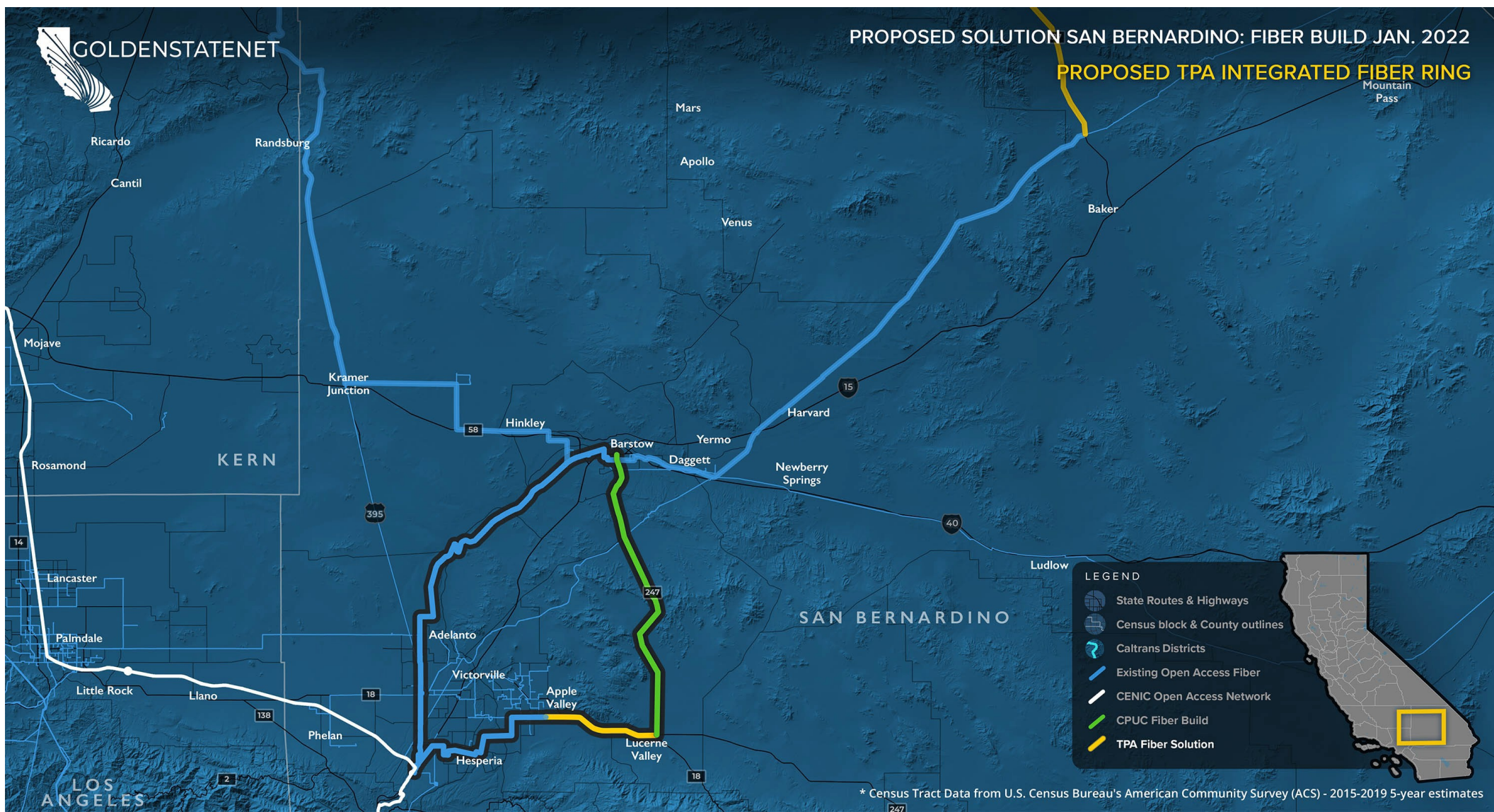
\* Census Tract Data from U.S. Census Bureau's American Community Survey (ACS) - 2015-2019 5-year estimates



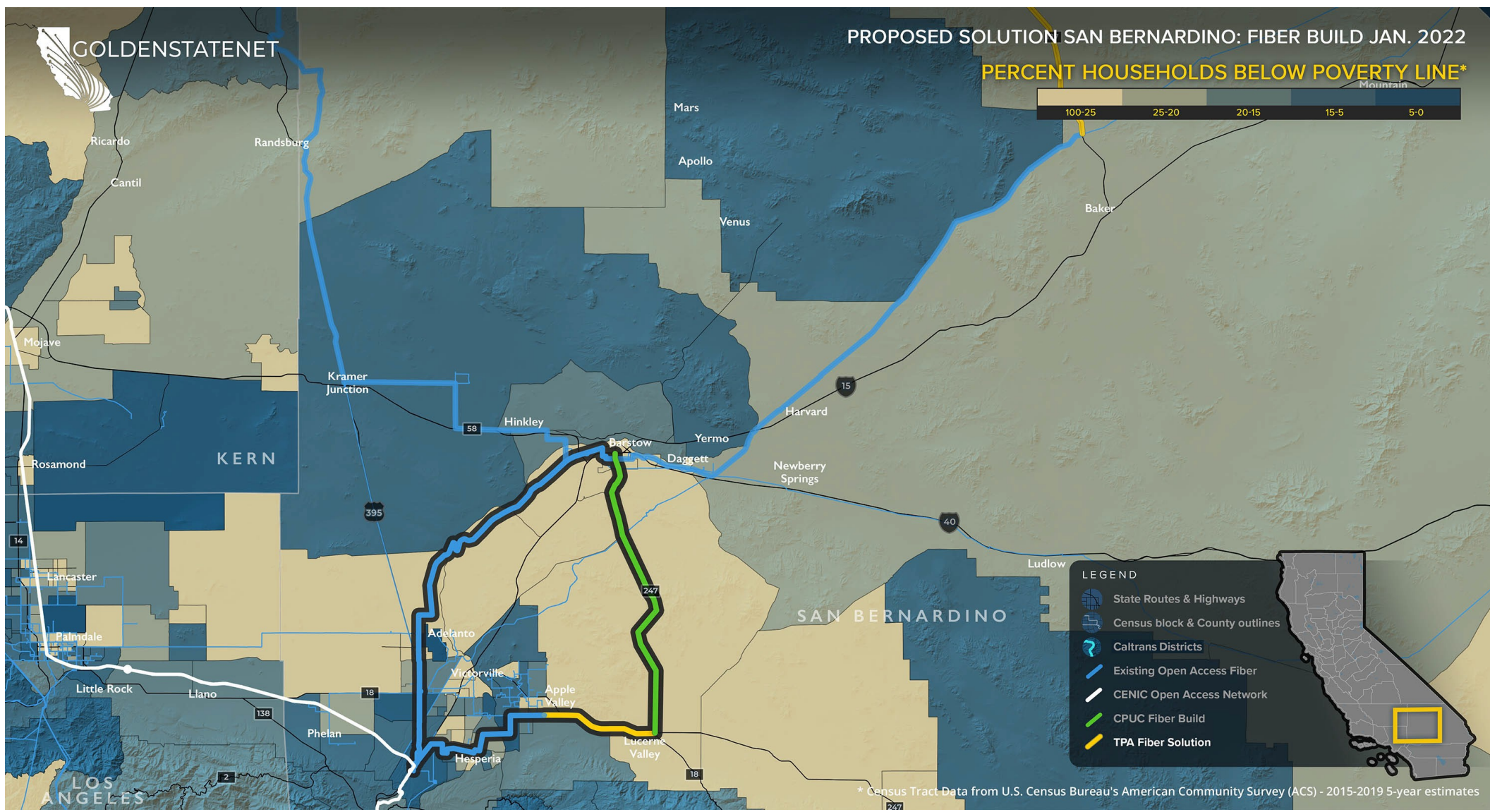


\* Census Tract Data from U.S. Census Bureau's American Community Survey (ACS) - 2015-2019 5-year estimates

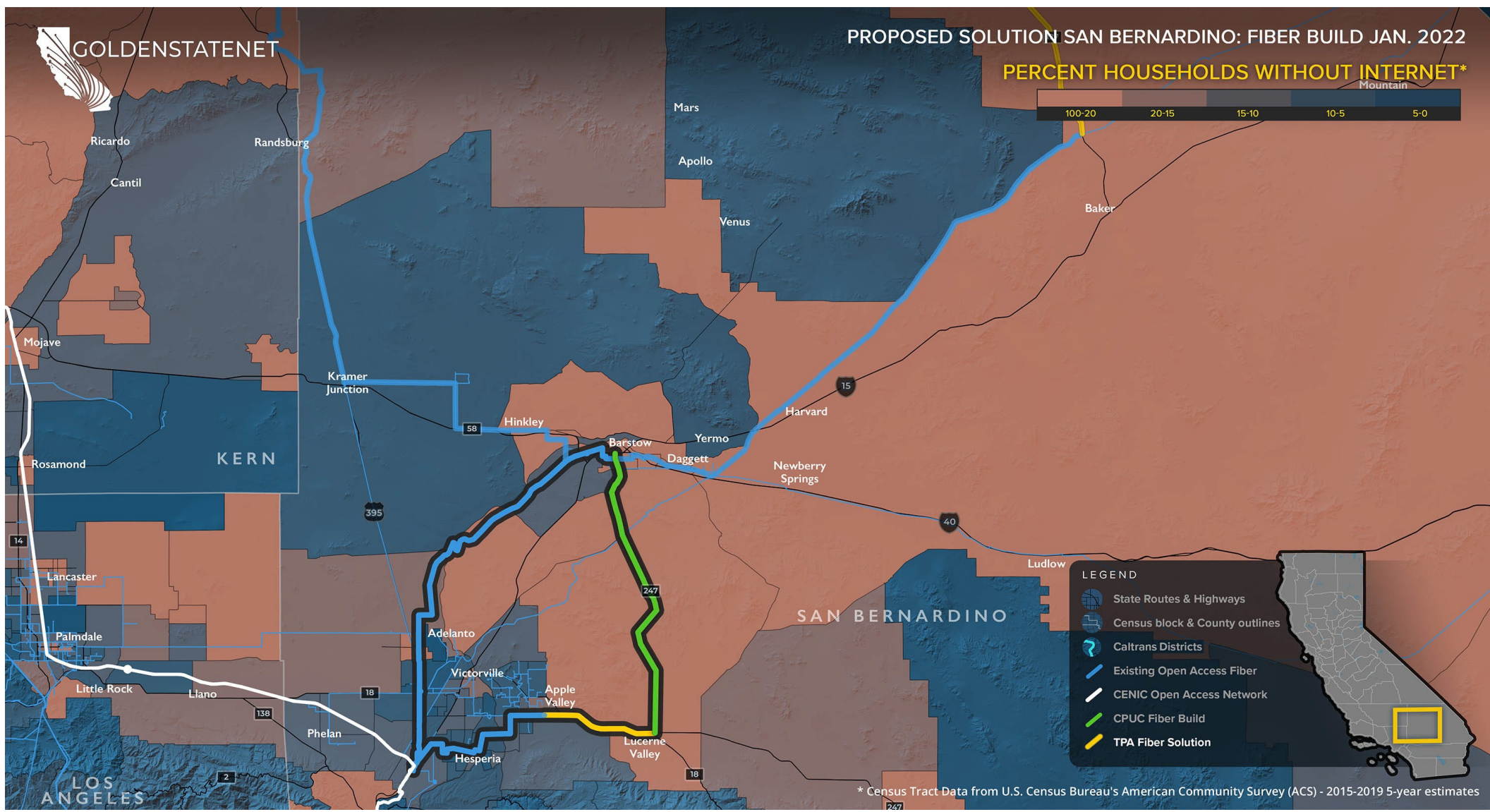




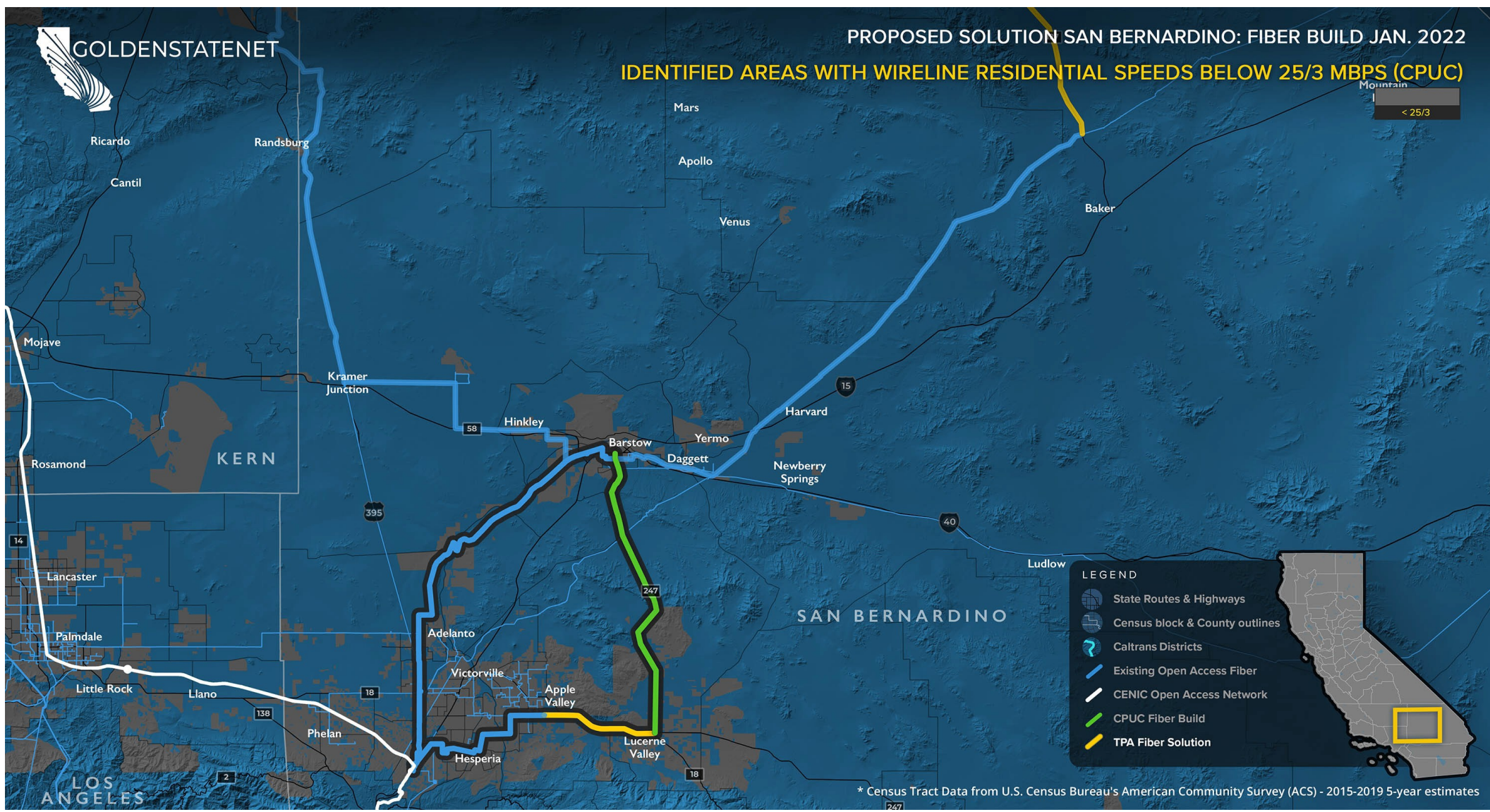




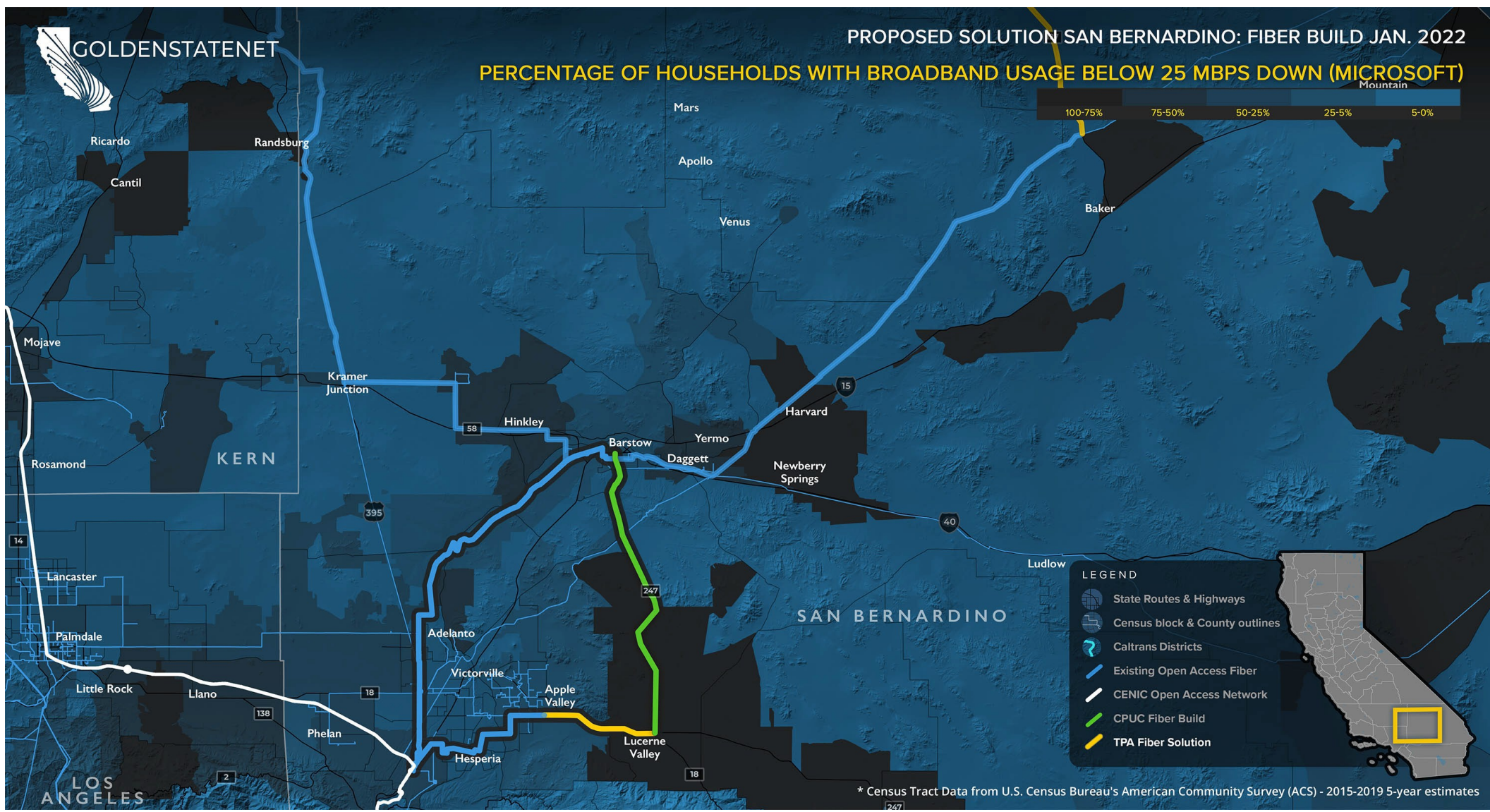












## Data Sources\*

- American Community Survey - Internet Connectivity
- American Community Survey - Poverty Status
- California 2020 Legislative District Boundaries
- California Broadband Availability Maps and GIS Data
  - 20 Layers used from combined database
- California Census Blocks
- California Census Tracts
- California Counties
- California Fire Hazard Severity Zones
- California National Highway System
- California Major Lakes and Reservoirs
- California Parks Land
- California State Highway Network (SHN)
- California Tribal Lands
- CalTrans Juridictions
- CENIC Digital Fiber Segments
- CPUC Fixed Served Status
- Existing Open Access Networks - Under NDA
- FCC Fixed Consumer Deployment
- Microsoft Broadband Usage Percentages Dataset
- Ookla Test Data Results by Census Tract
- Technology Use Demographics (e.g. Internet use in home) by Census Tract

*\*All data was published between 2019 - 2021 and represents the most current data available. Not all layers are represented on the maps above. However, the data was utilized as a part of the development process.*



GOLDENSTATENET

