



Project 16 | Orange County Overview Packet
January 31, 2022

This map identifies the initial 18 broadband project areas and the network solutions proposed by the Third Party Administrator (TPA), GoldenStateNet, which build upon the California Public Utilities Commission (CPUC) recommended routes. Highlighted in this packet are the solutions identified for the Orange County Project and other geospatially registered data sets which influenced them.



Project 16 | Orange County Summary

While Orange County currently has sufficient open-access broadband infrastructure available in many places, the region still lacks affordable services which have created a significant amount of underserved areas. The California Public Utilities Commission has proposed a middle-mile link for neighborhoods south of Fullerton and Buena Park, west through Garden Grove, and south from Tustin to Newport Beach.

To achieve this, GoldenStateNet proposes to procure an Indefeasible Right of Use (IRU) dark fiber lease. This leased infrastructure will provide an opportunity for a cadre of small, last-mile urban providers to access underserved neighborhoods.

However, unlike most other current projects, the challenge is not technical in nature but socioeconomic. The ability to afford Internet services is particularly challenging in the underprivileged neighborhoods of Orange County. To help address these issues, GoldenStateNet recommends that last-mile providers, metropolitan planning organizations, local governments, community groups, and other stakeholders work together to address barriers to service adoption in these neighborhoods. Similar challenges are outlined in the proposed plan for Los Angeles (see Project Report #15) and Oakland (see Project Report #8).

Project 16 | Orange County Highlights

Type of Solution:	Indefeasible Right of Use (IRU) dark fiber lease
Highways/Routes:	HWY 22, 55, 91
Start and End Points or Cities connected:	Tustin
Approximate Fiber Miles:	80
Quantity of Fibers:	4
Approximate Start Date:	2022
Regional Transportation Planning Agency (RTPA) & Metropolitan Planning Organizations (MPO):	Orange County Transportation Authority, Southern California Association of Governments

GoldenStateNet Maps

The appended maps share detailed visualizations of the GoldenStateNet (TPA) recommended middle-mile network solutions. The maps illustrate the complex geographical, topological, technological, and socioeconomic landscape of California.

In combination with available network assets and regional partnerships, the map data has helped to directly inform GoldenStateNet's well-considered proposals.



PROPOSED SOLUTION ORANGE COUNTY: FIBER BUILD JAN. 2022 CALTRANS DISTRICTS



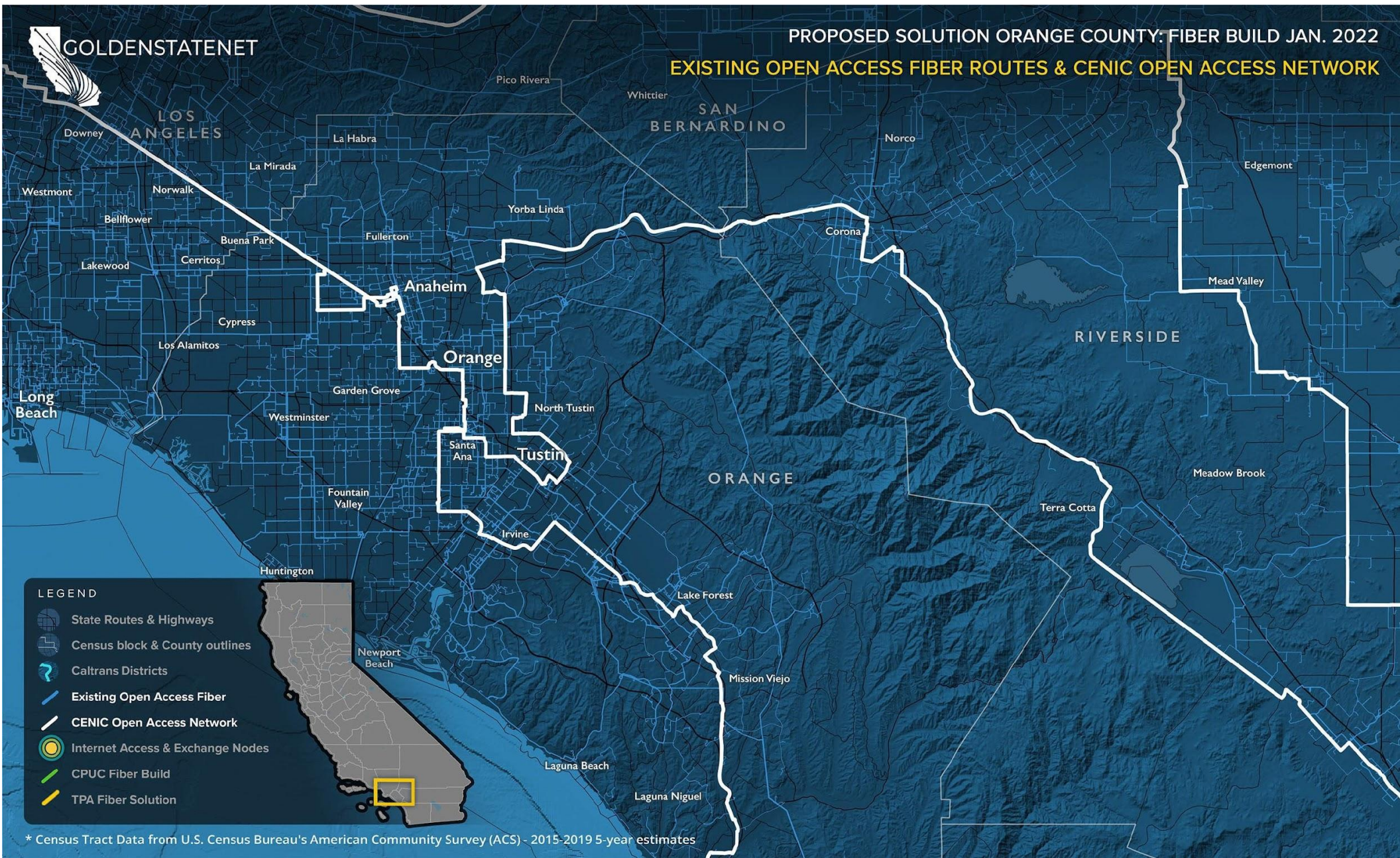
- LEGEND**
- State Routes & Highways
 - Census block & County outlines
 - Caltrans Districts
 - Existing Open Access Fiber
 - CENIC Open Access Network
 - Internet Access & Exchange Nodes
 - CPUC Fiber Build
 - TPA Fiber Solution

* Census Tract Data from U.S. Census Bureau's American Community Survey (ACS) - 2015-2019 5-year estimates



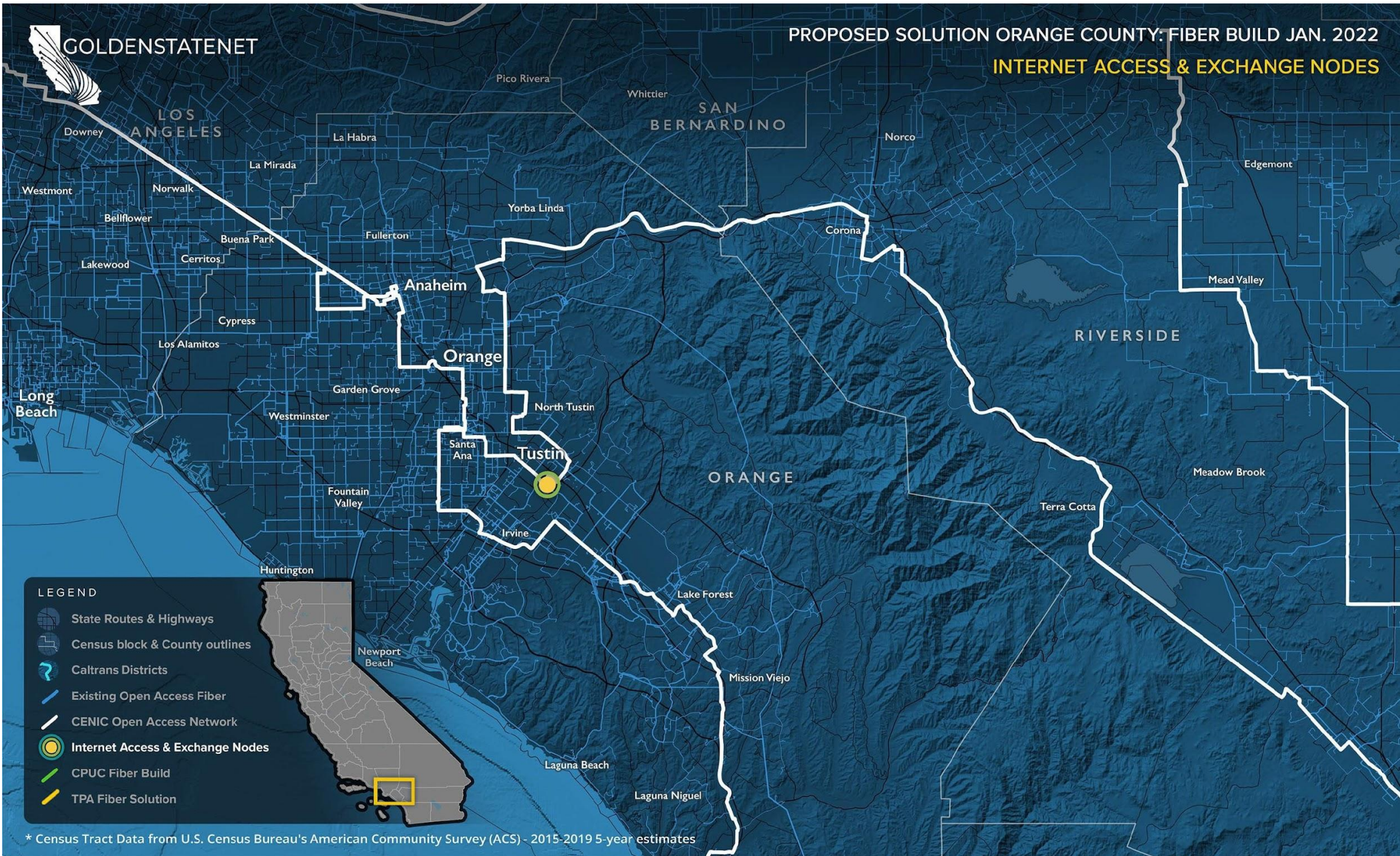
PROPOSED SOLUTION ORANGE COUNTY: FIBER BUILD JAN. 2022

EXISTING OPEN ACCESS FIBER ROUTES & CENIC OPEN ACCESS NETWORK



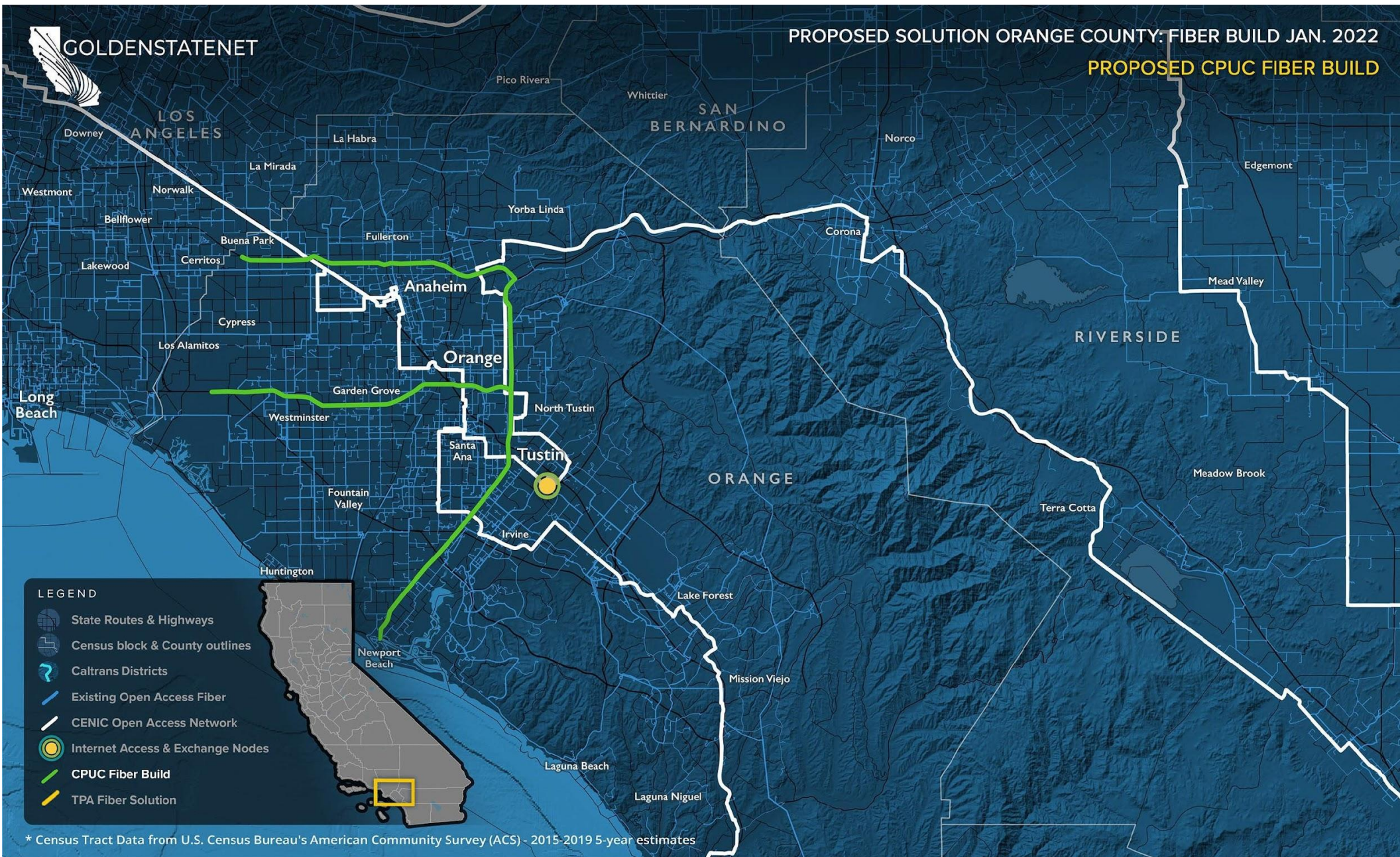


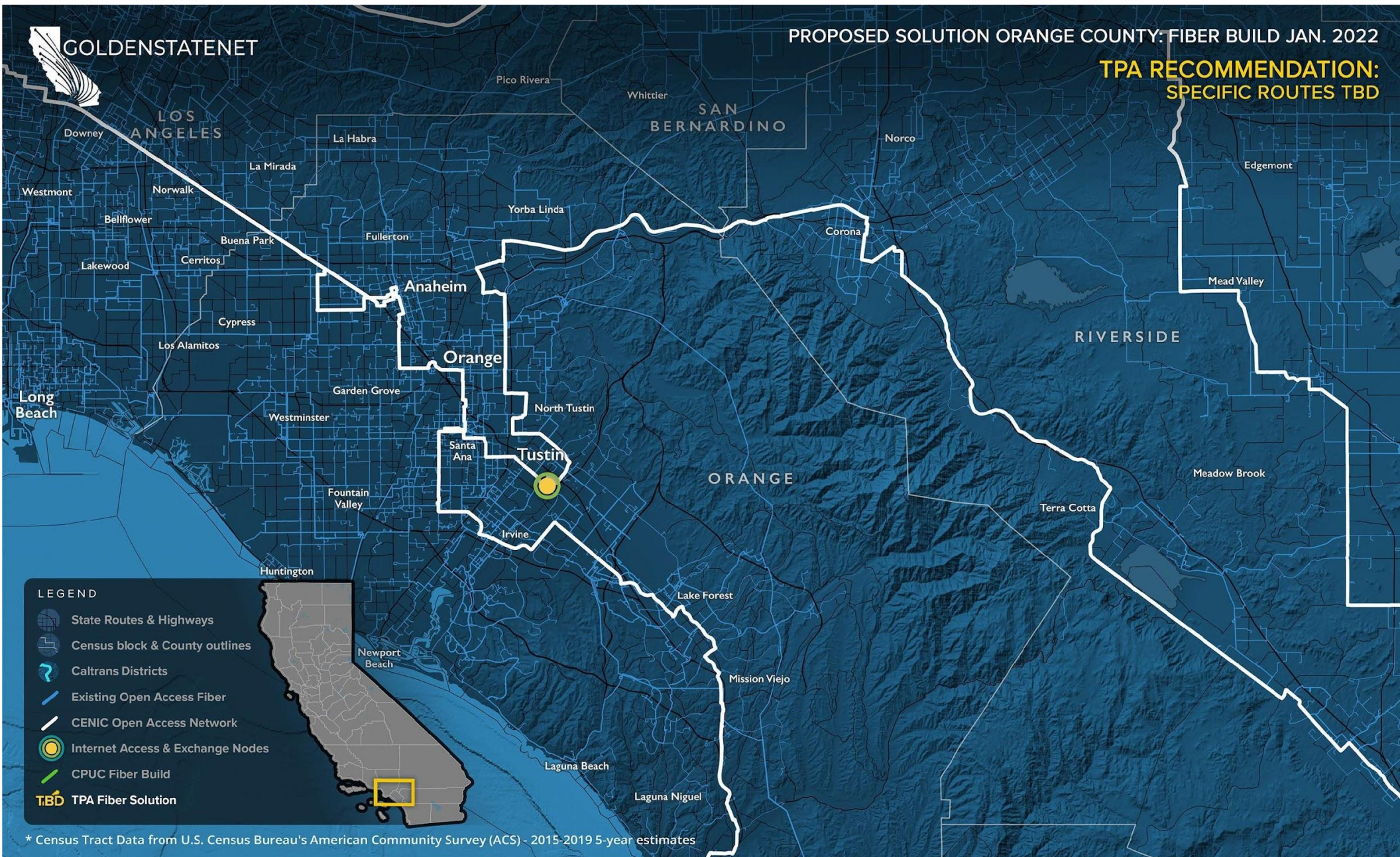
PROPOSED SOLUTION ORANGE COUNTY: FIBER BUILD JAN. 2022 INTERNET ACCESS & EXCHANGE NODES

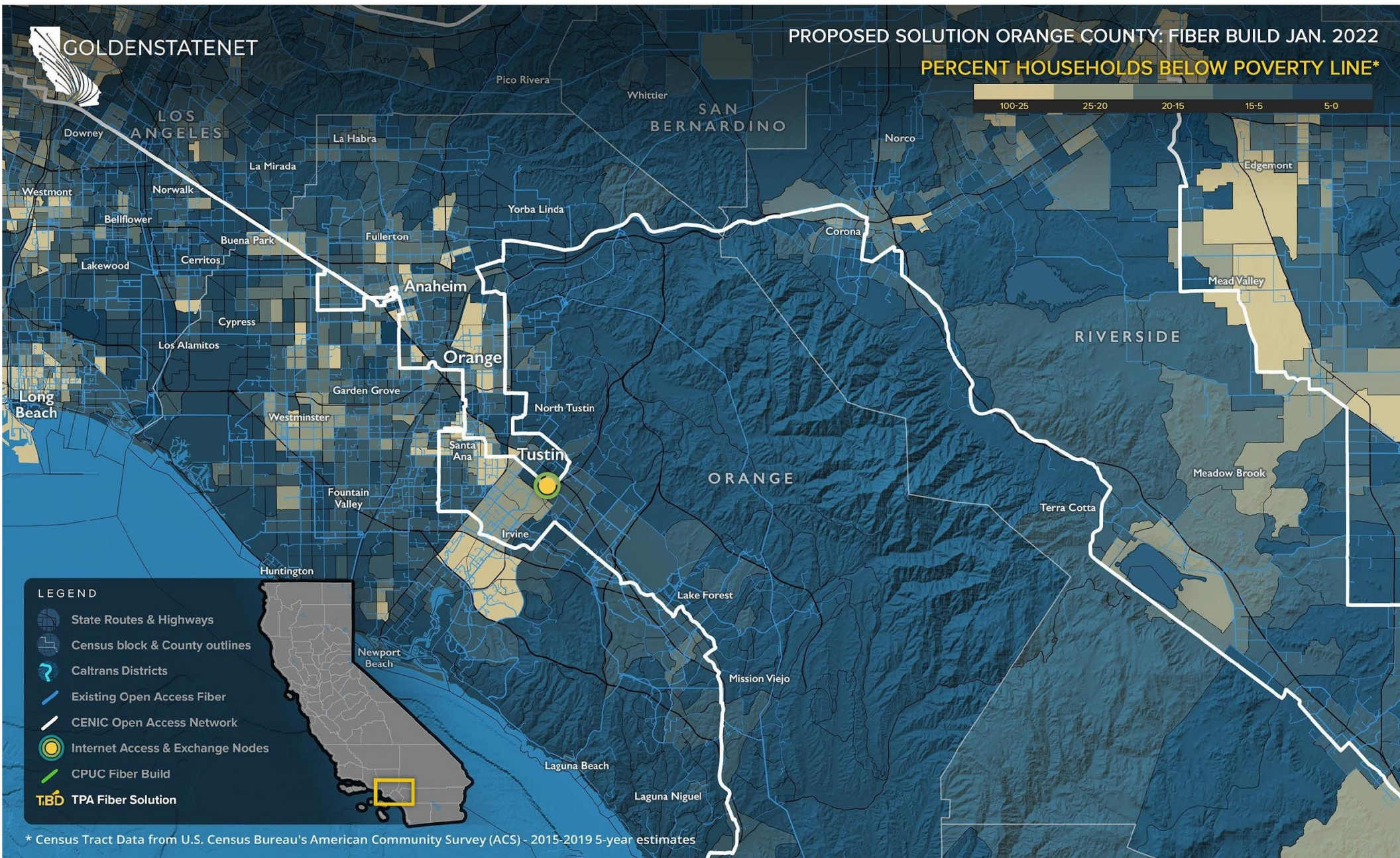


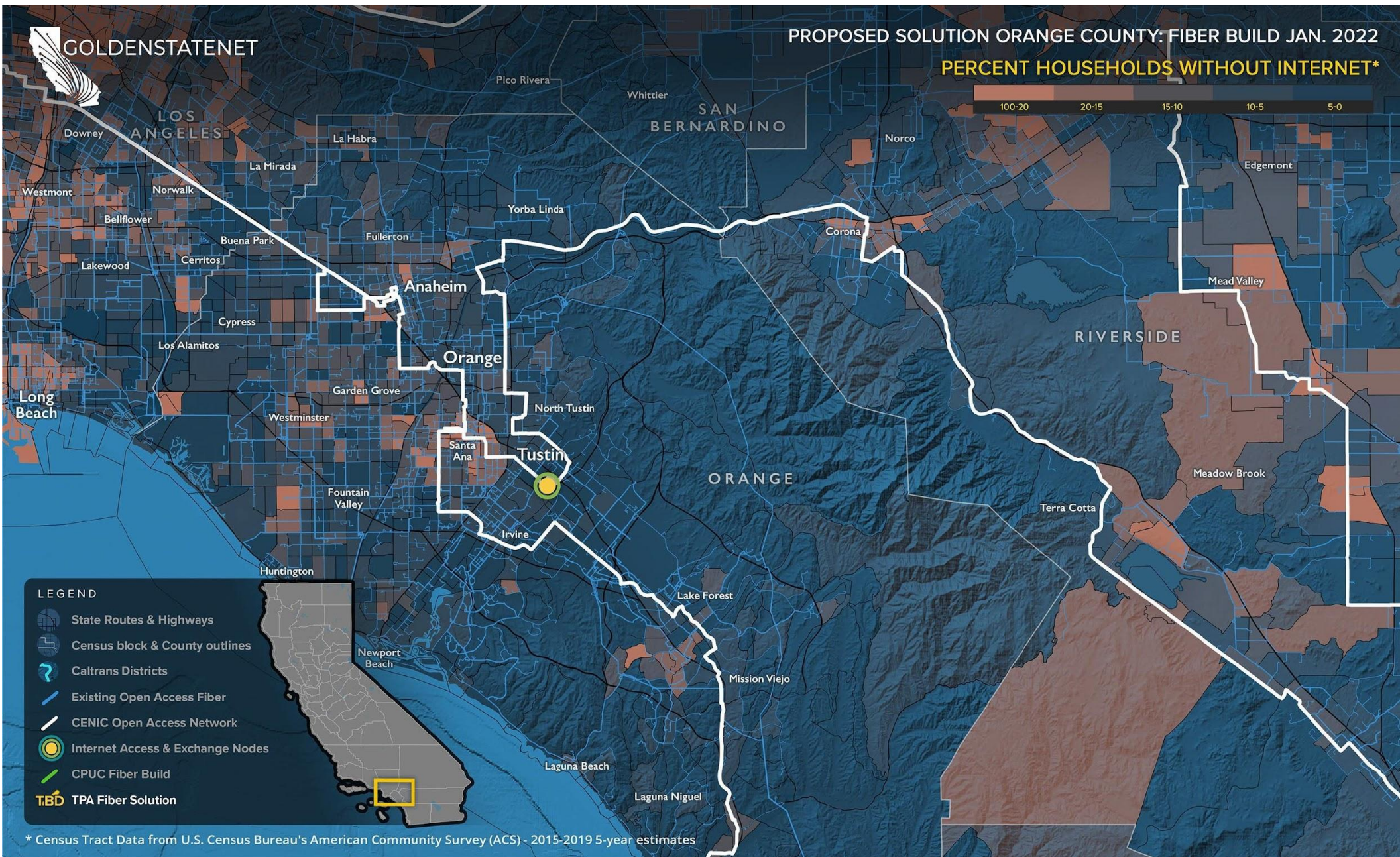
- LEGEND**
- State Routes & Highways
 - Census block & County outlines
 - Caltrans Districts
 - Existing Open Access Fiber
 - CENIC Open Access Network
 - Internet Access & Exchange Nodes
 - CPUC Fiber Build
 - TPA Fiber Solution

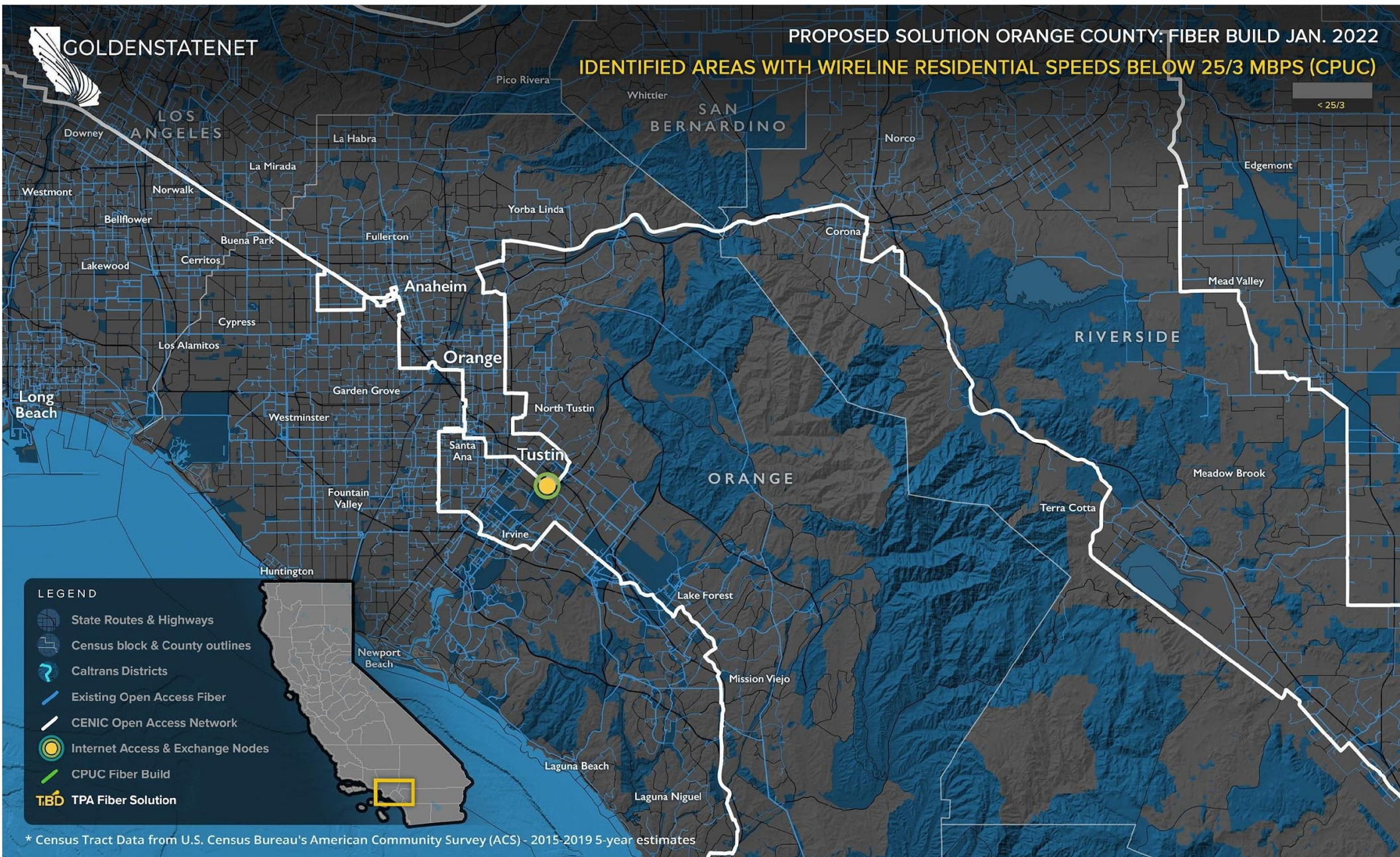
* Census Tract Data from U.S. Census Bureau's American Community Survey (ACS) - 2015-2019 5-year estimates







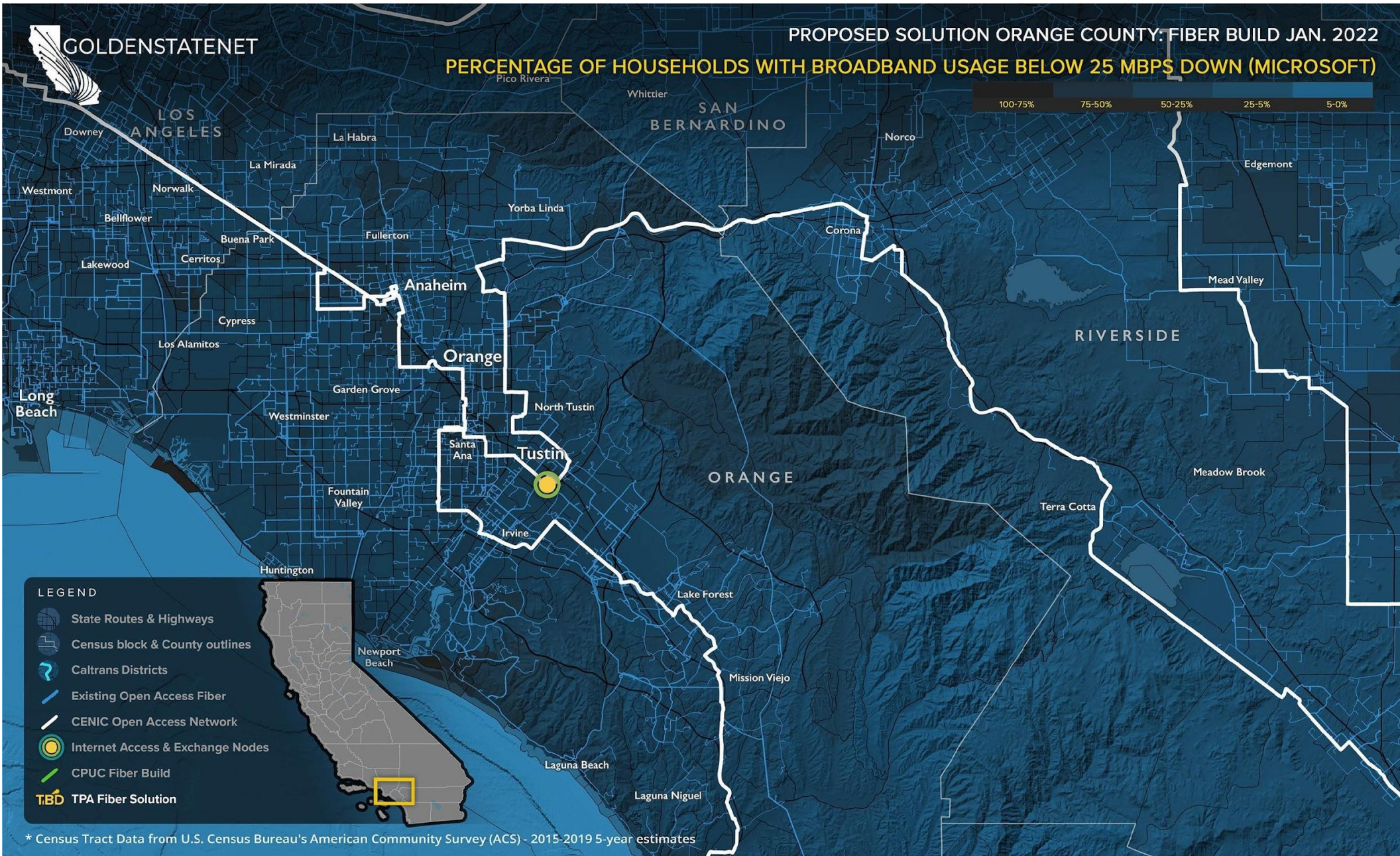






PROPOSED SOLUTION ORANGE COUNTY: FIBER BUILD JAN. 2022

PERCENTAGE OF HOUSEHOLDS WITH BROADBAND USAGE BELOW 25 MBPS DOWN (MICROSOFT)



* Census Tract Data from U.S. Census Bureau's American Community Survey (ACS) - 2015-2019 5-year estimates

Data Sources*

- American Community Survey - Internet Connectivity
- American Community Survey - Poverty Status
- California 2020 Legislative District Boundaries
- California Broadband Availability Maps and GIS Data
 - 20 Layers used from combined database
- California Census Blocks
- California Census Tracts
- California Counties
- California Fire Hazard Severity Zones
- California National Highway System
- California Major Lakes and Reservoirs
- California Parks Land
- California State Highway Network (SHN)
- California Tribal Lands
- CalTrans Juridictions
- CENIC Digital Fiber Segments
- CPUC Fixed Served Status
- Existing Open Access Networks - Under NDA
- FCC Fixed Consumer Deployment
- Microsoft Broadband Usage Percentages Dataset
- Ookla Test Data Results by Census Tract
- Technology Use Demographics (e.g. Internet use in home) by Census Tract

**All data was published between 2019 - 2021 and represents the most current data available. Not all layers are represented on the maps above. However, the data was utilized as a part of the development process.*

