



GOLDENSTATENET

Project 7 | Calaveras Overview Packet
January 31, 2022

This map identifies the initial 18 broadband project areas and the network solutions proposed by the Third Party Administrator (TPA), GoldenStateNet, which build upon the California Public Utilities Commission (CPUC) recommended routes. Highlighted in this packet are the solutions identified for the Calaveras Project and other geospatially registered data sets which influenced them.



Project 7 | Calaveras Summary

GoldenStateNet’s proposal for Calaveras will bring broadband service closer to areas around Angels Camp that currently lack adequate Internet service and fall within a severe fire hazard zone. The Chicken Ranch Rancheria will benefit from the proposed route. The Tuolumne Rancheria will be in the region and may have future opportunities with the proposed route.

The proposal incorporates California Public Utilities Commission (CPUC) plans to create a 13-mile network route between Angels Camp and Copperopolis running along Highway 4. The project completes a regional network ring that will add resilience and greater reliability to local service, providing a consistent and improved online experience for homes and businesses in the region.

The Caltrans-managed construction project has broad local support and will allow regional last-mile providers to extend service to more residents and businesses.



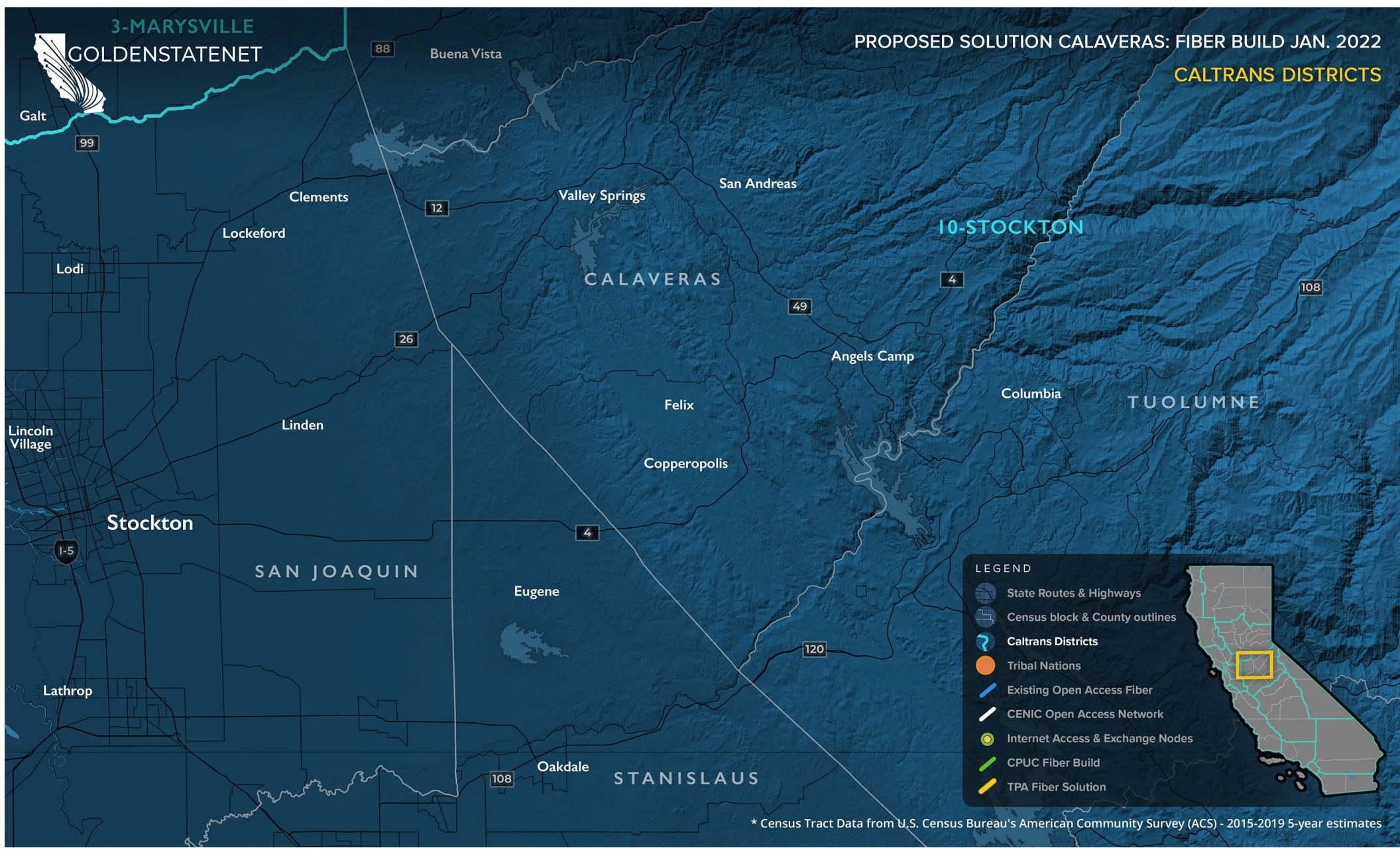
Project 7 | Calaveras Highlights

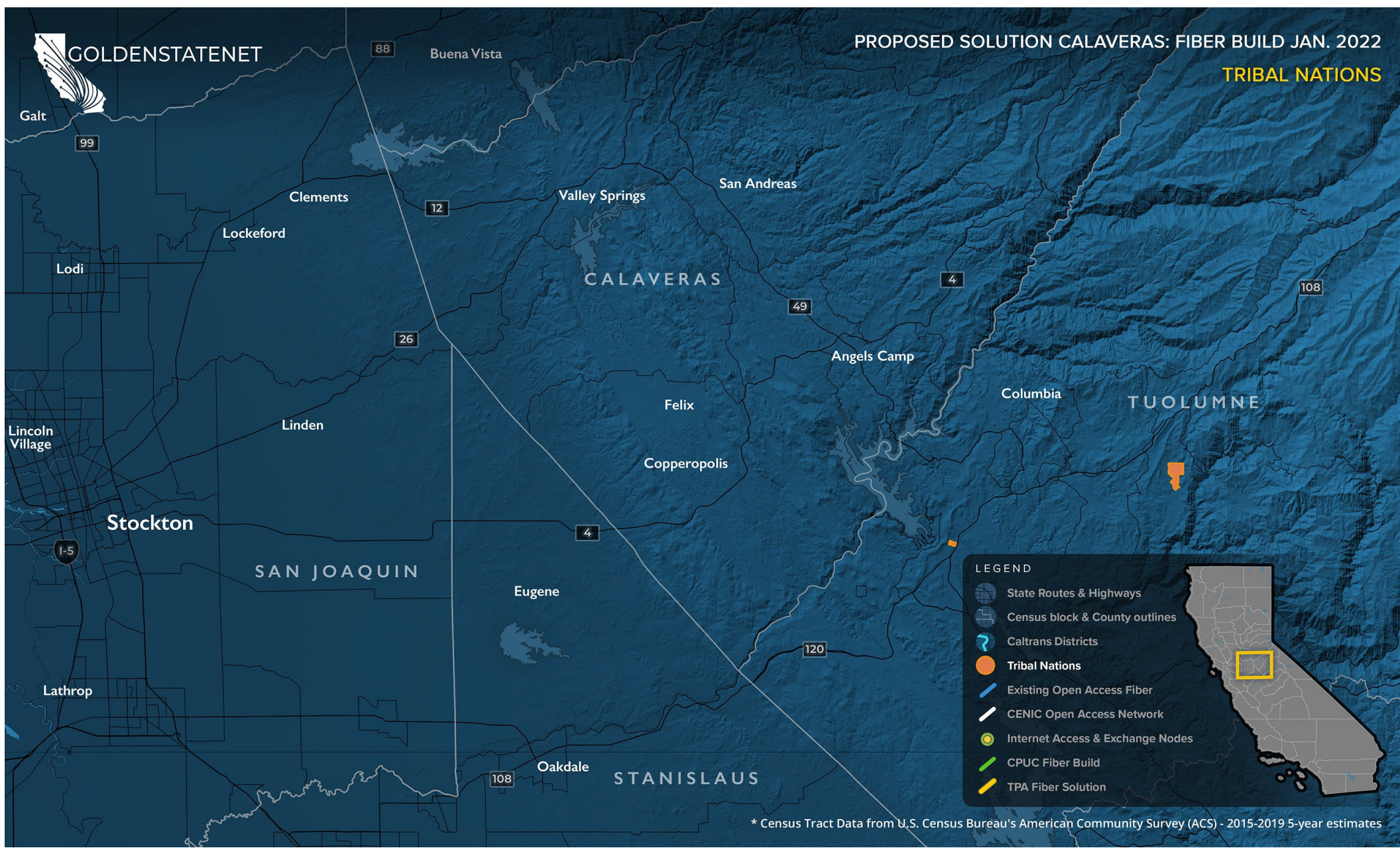
Type of Solution:	New Construction Fiber Build
Highways/Routes:	HWY 4
Start and End Points or Cities connected:	Angels Camp, Copperopolis, Stockton
Approximate Fiber Miles:	28
Quantity of Fibers:	288 (4 for backhaul)
Approximate Start Date:	2022
Tribal Nations Currently on the Project Path:	Chicken Ranch Rancheria
Tribal Nations with Future Opportunities:	Tuolumne Rancheria
Regional Broadband Consortium:	Central Sierra Connect Broadband Consortium
Regional Transportation Planning Agency (RTPA) & Metropolitan Planning Organization (MPO):	Calaveras Council of Governments

GoldenStateNet Maps

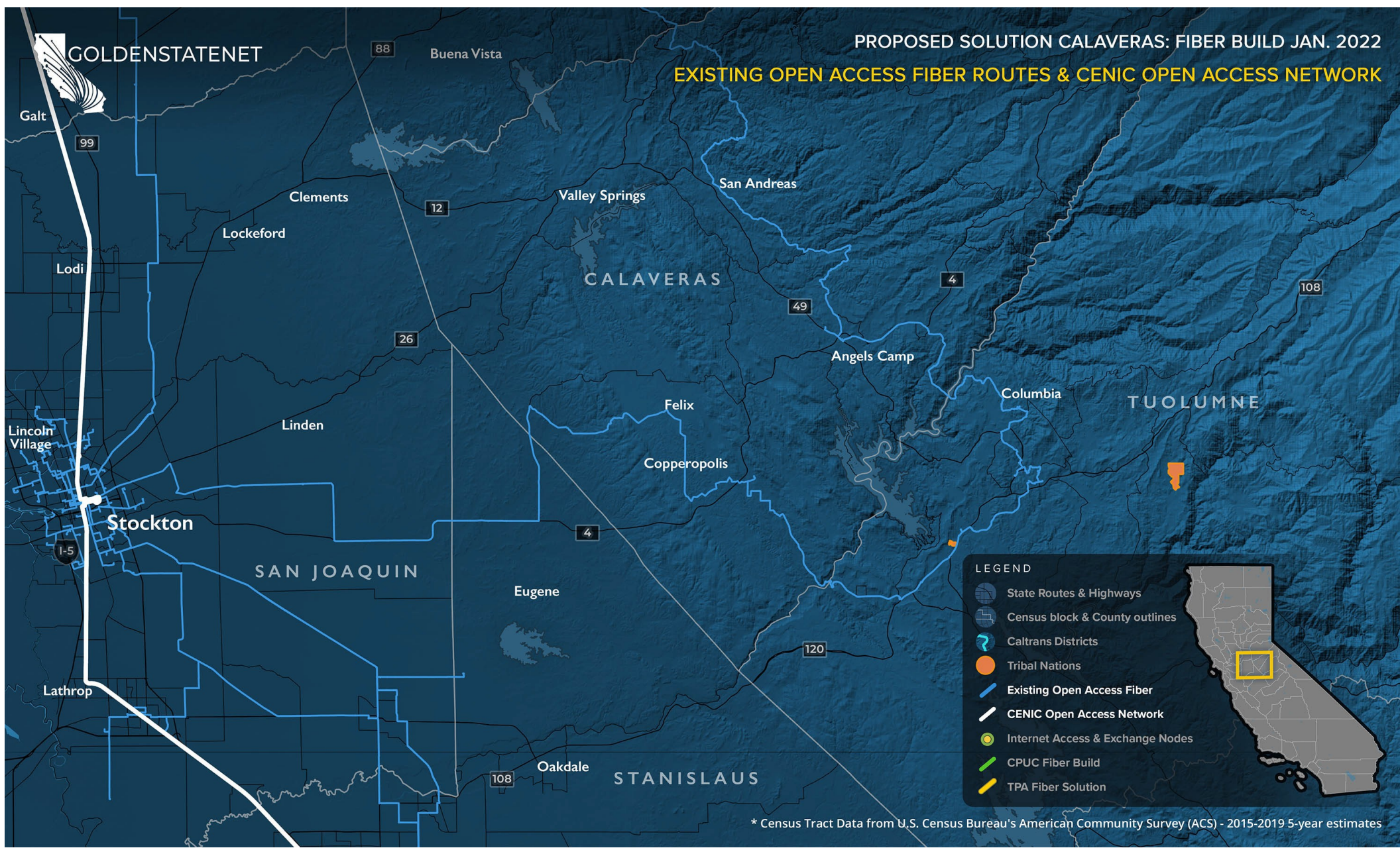
The appended maps share detailed visualizations of the GoldenStateNet (TPA) recommended middle-mile network solutions. The maps illustrate the complex geographical, topological, technological, and socioeconomic landscape of California.

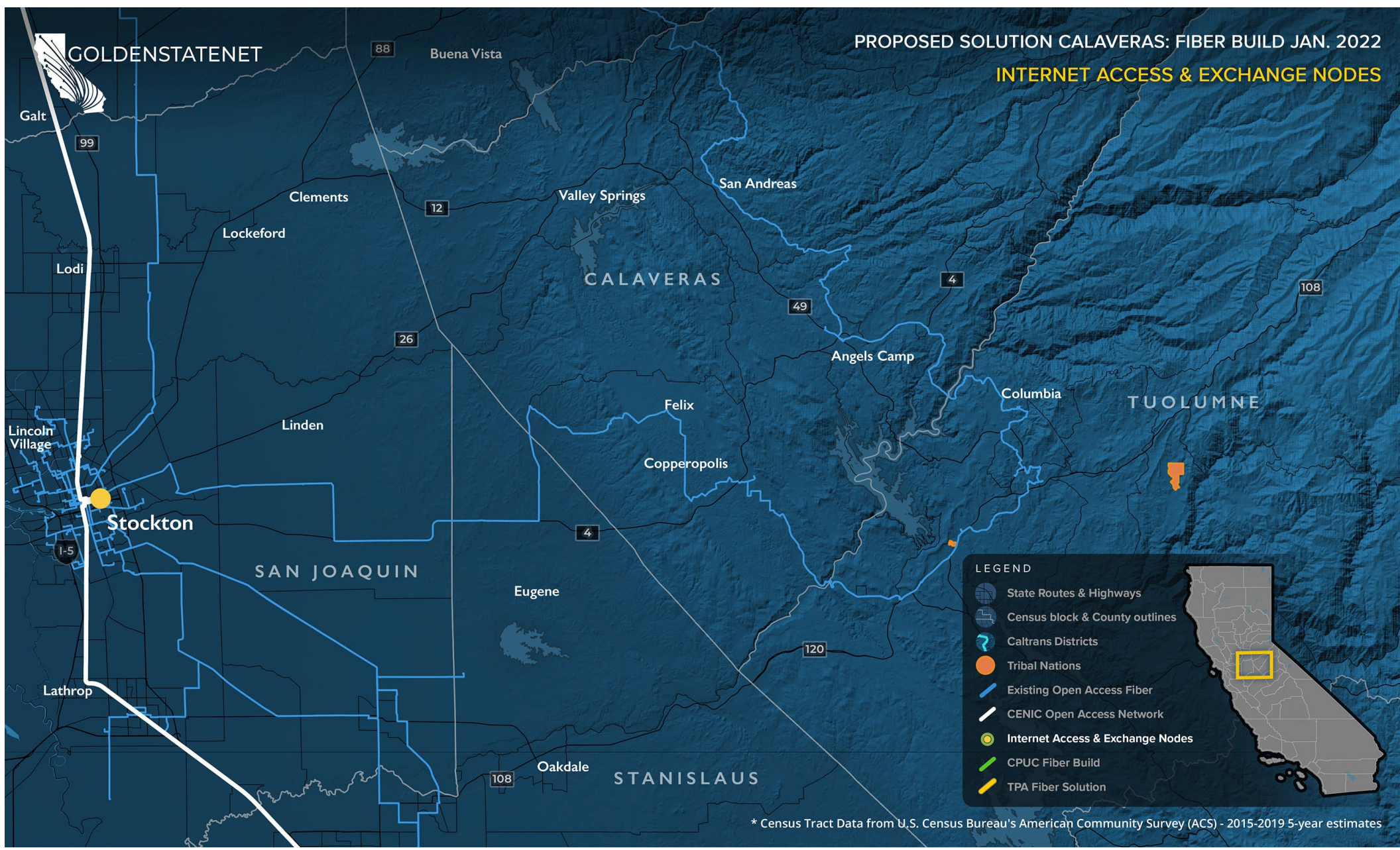
In combination with available network assets and regional partnerships, the map data has helped to directly inform GoldenStateNet's well-considered proposals.





* Census Tract Data from U.S. Census Bureau's American Community Survey (ACS) - 2015-2019 5-year estimates



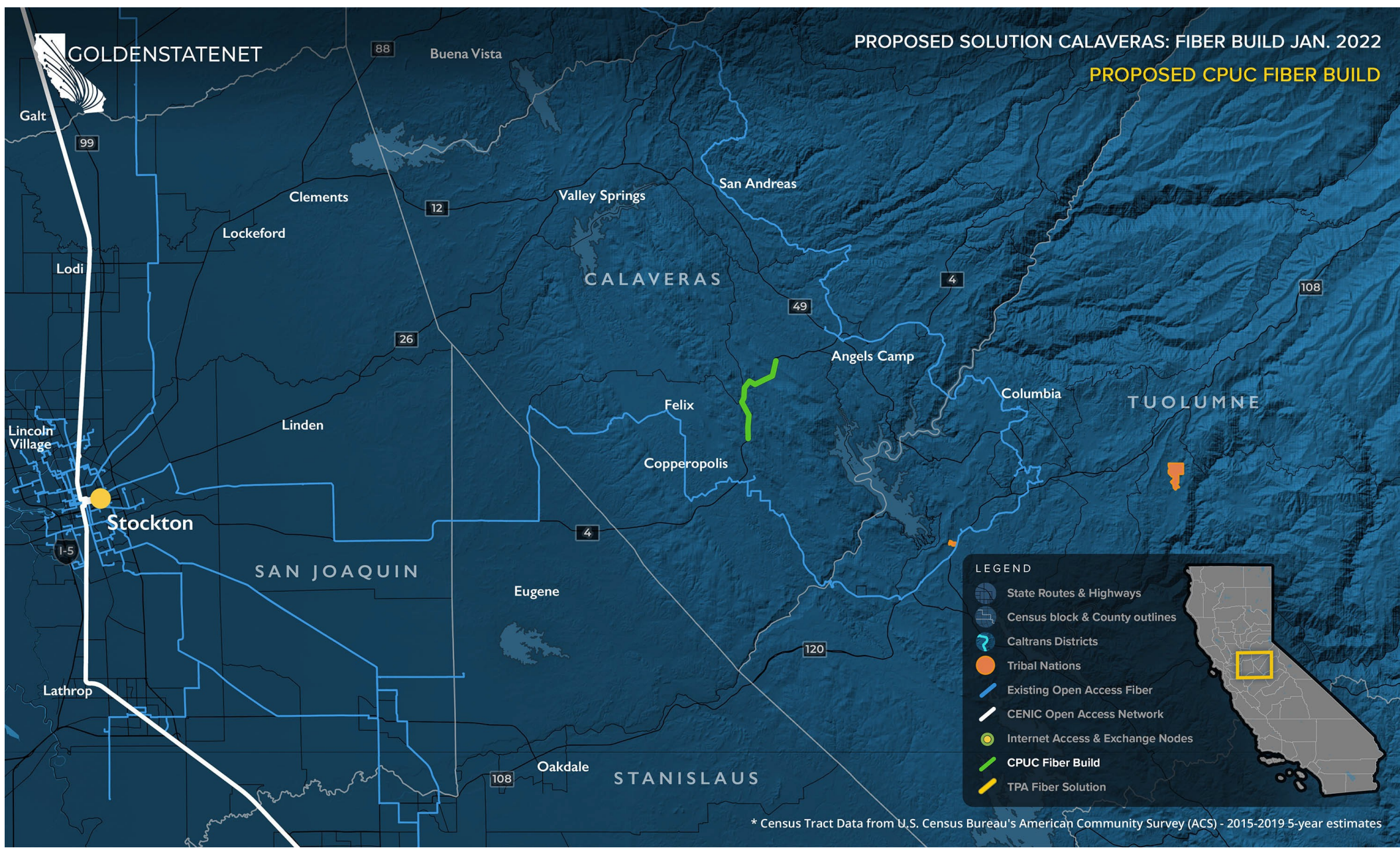


PROPOSED SOLUTION CALAVERAS: FIBER BUILD JAN. 2022
INTERNET ACCESS & EXCHANGE NODES

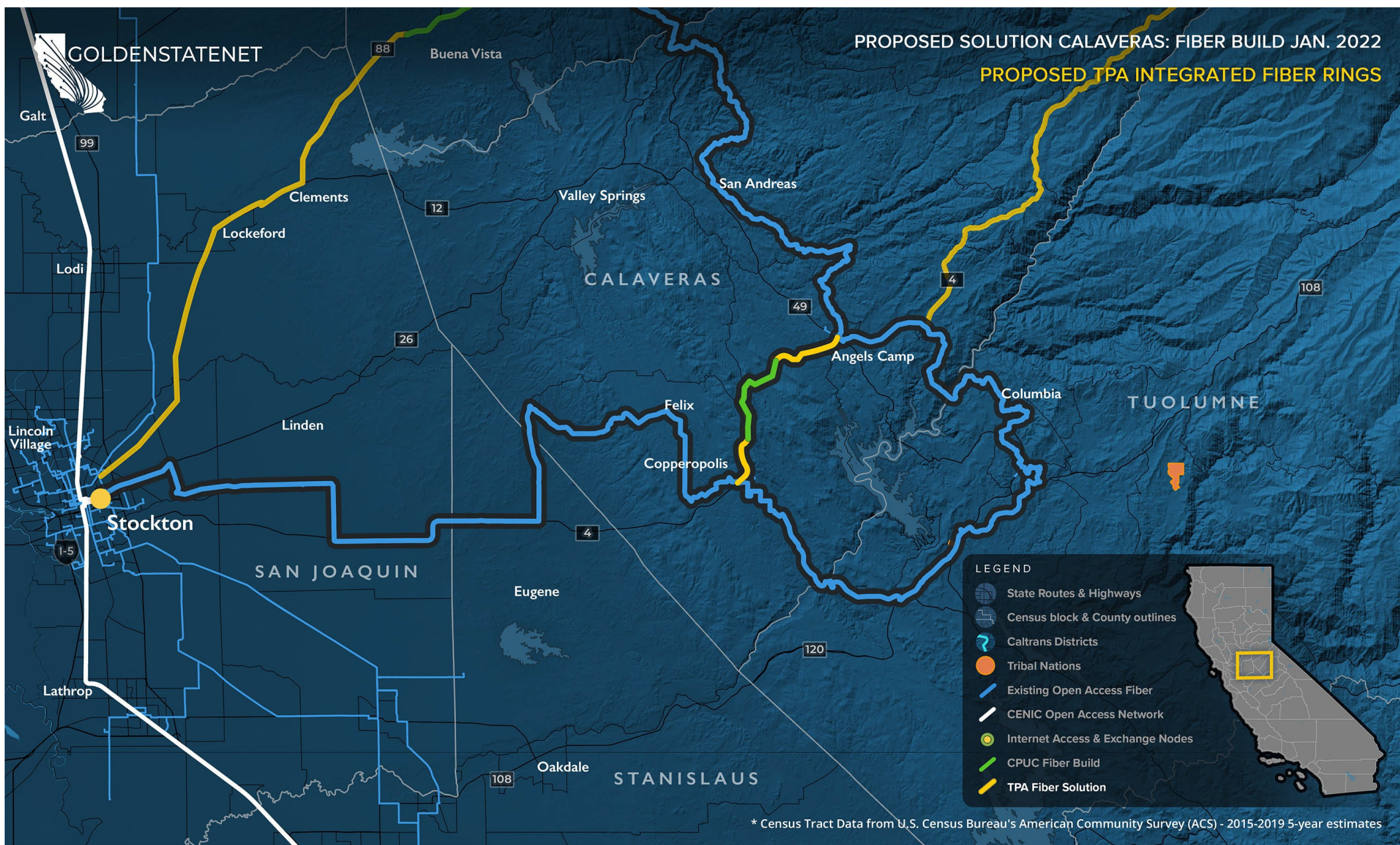
LEGEND

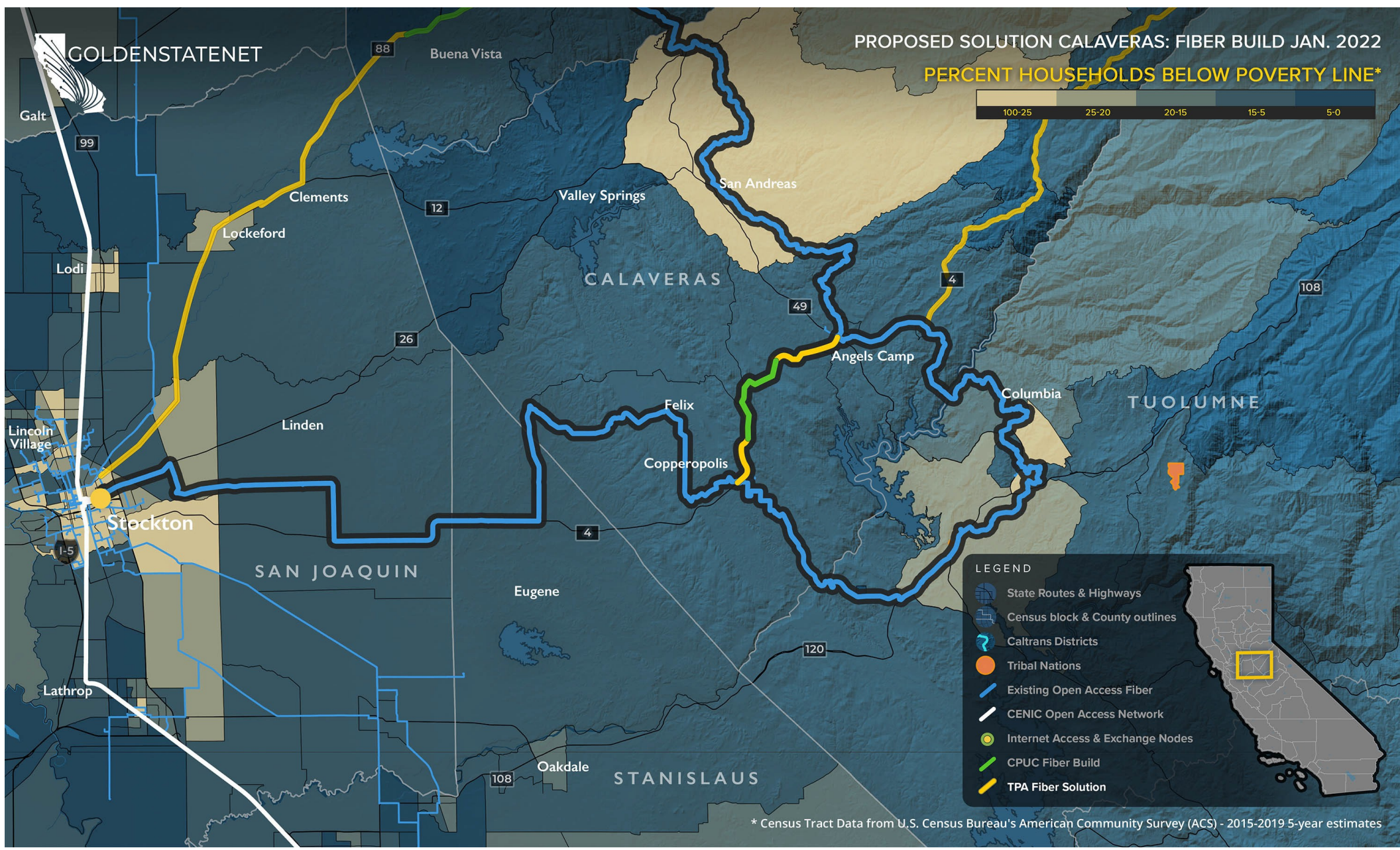
- State Routes & Highways
- Census block & County outlines
- Caltrans Districts
- Tribal Nations
- Existing Open Access Fiber
- CENIC Open Access Network
- Internet Access & Exchange Nodes
- CPUC Fiber Build
- TPA Fiber Solution

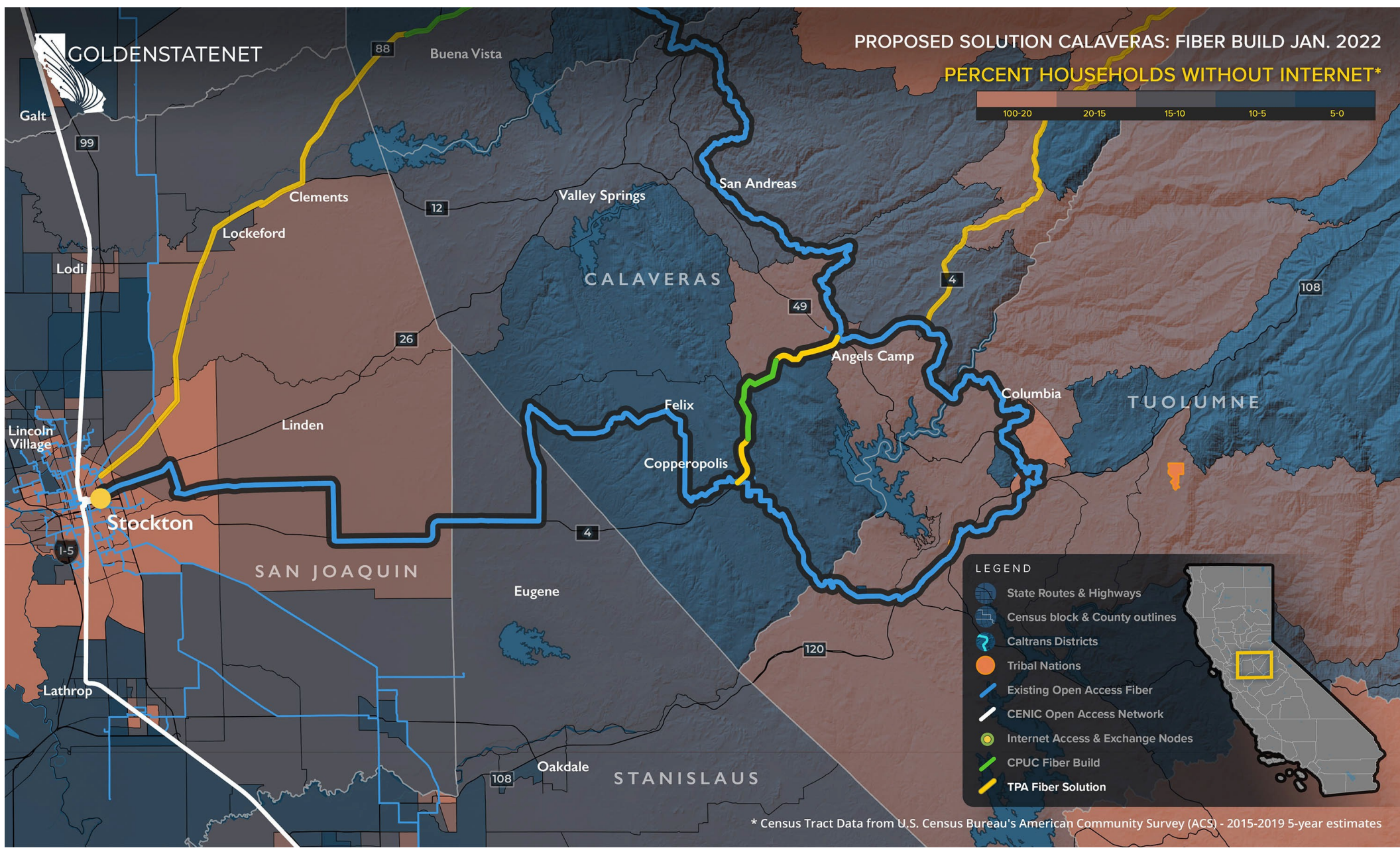
* Census Tract Data from U.S. Census Bureau's American Community Survey (ACS) - 2015-2019 5-year estimates

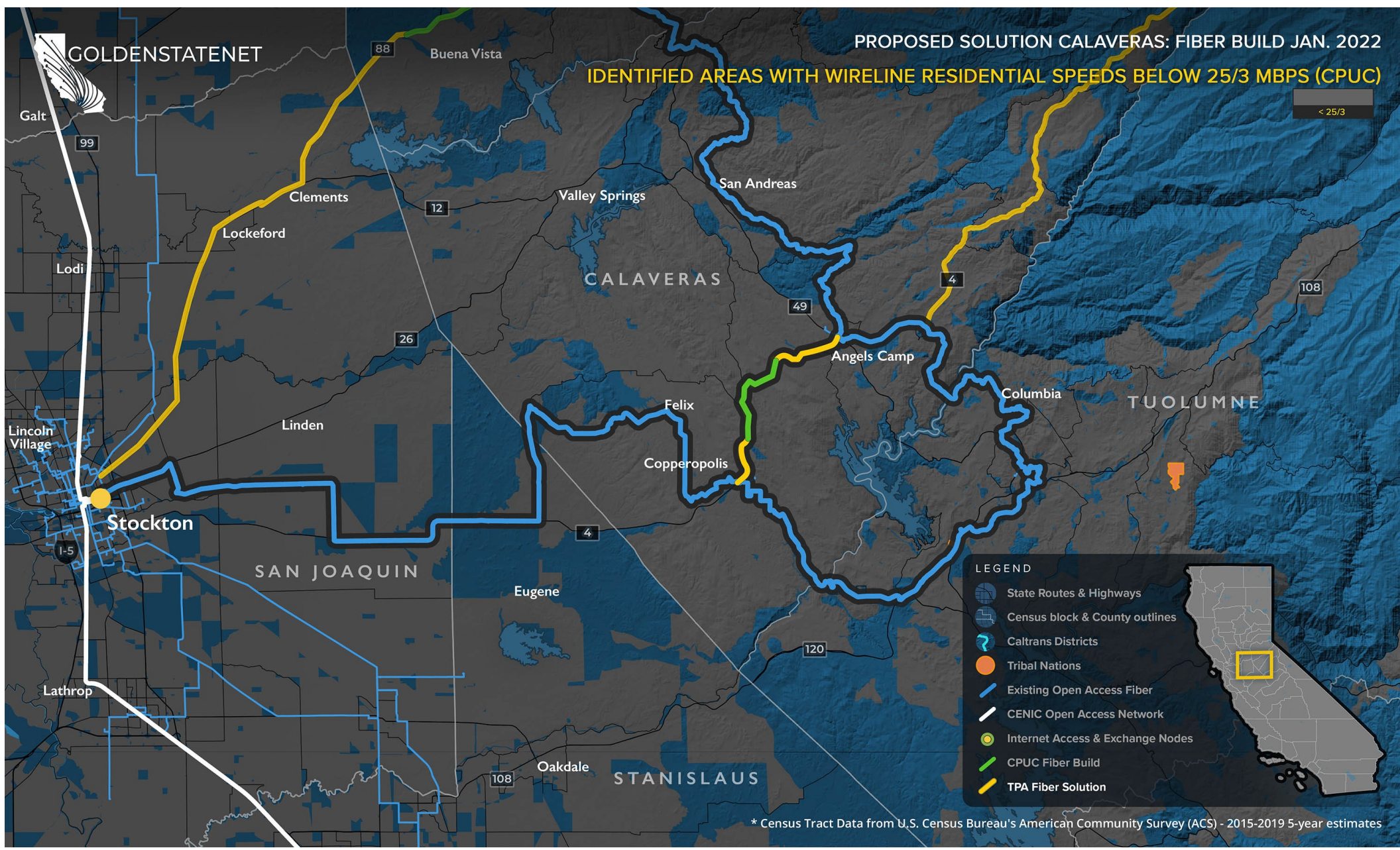


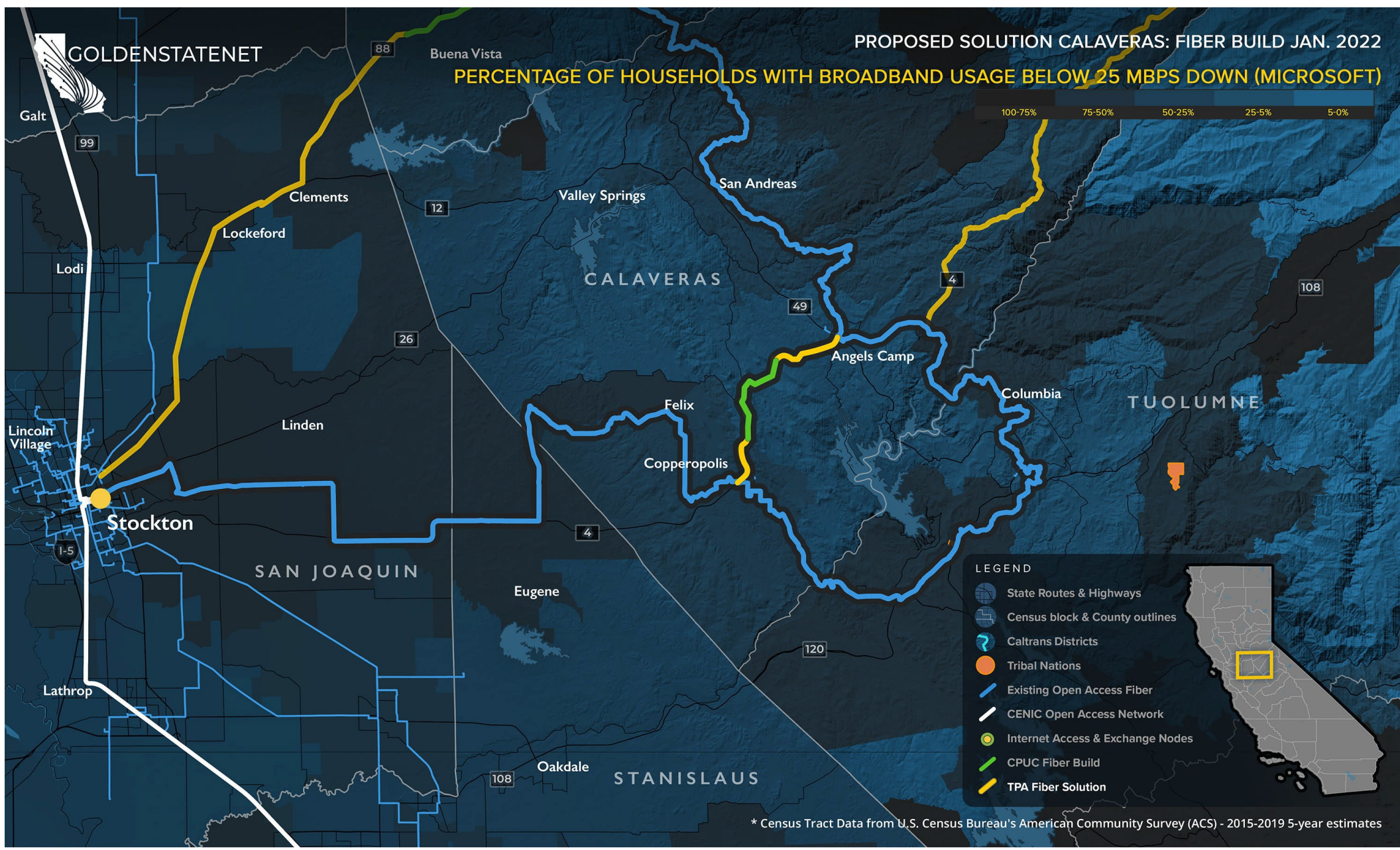
* Census Tract Data from U.S. Census Bureau's American Community Survey (ACS) - 2015-2019 5-year estimates











Data Sources*

- American Community Survey - Internet Connectivity
- American Community Survey - Poverty Status
- California 2020 Legislative District Boundaries
- California Broadband Availability Maps and GIS Data
 - 20 Layers used from combined database
- California Census Blocks
- California Census Tracts
- California Counties
- California Fire Hazard Severity Zones
- California National Highway System
- California Major Lakes and Reservoirs
- California Parks Land
- California State Highway Network (SHN)
- California Tribal Lands
- CalTrans Jurisdictions
- CENIC Digital Fiber Segments
- CPUC Fixed Served Status
- Existing Open Access Networks - Under NDA
- FCC Fixed Consumer Deployment
- Microsoft Broadband Usage Percentages Dataset
- Ookla Test Data Results by Census Tract
- Technology Use Demographics (e.g. Internet use in home) by Census Tract

**All data was published between 2019 - 2021 and represents the most current data available. Not all layers are represented on the maps above. However, the data was utilized as a part of the development process.*



GOLDENSTATENET

